

# Refine and support goal setting

A suggestion for implementing the strategy  
'Design considerations in primary settings'  
from the Guide: [Universal Design for Learning](#)

---

## **Includes:**

- Purposeful goals
- Share goals in multiple ways
- Support planning and action
- Check for hidden barriers
- Reflection questions
- Useful resources

Inclusive Education

From

Guide: [Universal Design for Learning](#)

Strategy: [Design considerations in primary settings](#)

Suggestion: [Refine and support goal setting](#)

Date

29 August 2025

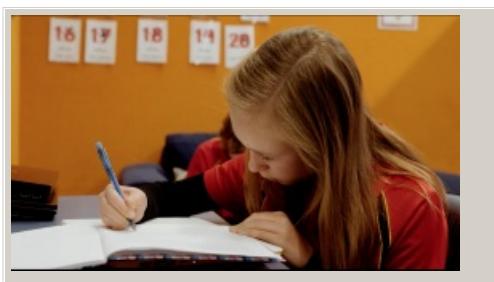
Link

[inclusive.tki.org.nz/guides/universal-design-for-learning/refine-and-support-goal-setting-2](http://inclusive.tki.org.nz/guides/universal-design-for-learning/refine-and-support-goal-setting-2)

---

## Purposeful goals

Students at Halswell School share their experience of goal setting and monitoring their own progress.



Video hosted on Vimeo <http://vimeo.com/146593157>

Closed Captions

**Source:**

[Enabling e-Learning \(NZ\)](http://elearning.tki.org.nz/Teaching/Innovative-learning-environments/Student-agency-in-an-innovative-learning-environment)

<http://elearning.tki.org.nz/Teaching/Innovative-learning-environments/Student-agency-in-an-innovative-learning-environment>

Inclusive Education

From

Guide: [Universal Design for Learning](#)

Strategy: [Design considerations in primary settings](#)

Suggestion: [Refine and support goal setting](#)

Date

29 August 2025

Link

[inclusive.tki.org.nz/guides/universal-design-for-learning/refine-and-support-goal-setting-2](https://inclusive.tki.org.nz/guides/universal-design-for-learning/refine-and-support-goal-setting-2)

---

## Share goals in multiple ways



Source:

Ministry of Education | Te Tāhuhu o te Mātauranga

[View full image \(170 KB\)](#)

Inclusive Education

From

Guide: [Universal Design for Learning](#)

Strategy: [Design considerations in primary settings](#)

Suggestion: [Refine and support goal setting](#)

Date

29 August 2025

Link

[inclusive.tki.org.nz/guides/universal-design-for-learning/refine-and-support-goal-setting-2](https://inclusive.tki.org.nz/guides/universal-design-for-learning/refine-and-support-goal-setting-2)

---

## Support planning and action

Students need consistent, small, and meaningful reminders to help them set goals, organise and make a plan.

Suggestions for supporting goal setting and self monitoring

- Provide models or examples of the process.
- Teach students how to plan.
- Provide guides and checklists for scaffolding goal-setting.
- Post goals, objectives, and schedules in an obvious place.
- Involve students in creating what the outcome might look like.
- Break the process up into small steps with visual, video, and verbal supports.
- Offer problem solving checklists.

Explore more practical suggestions on [Goalbook Toolkit](#).

Inclusive Education

From

Guide: [Universal Design for Learning](#)

Strategy: [Design considerations in primary settings](#)

Suggestion: [Refine and support goal setting](#)

Date

29 August 2025

Link

[inclusive.tki.org.nz/guides/universal-design-for-learning/refine-and-support-goal-setting-2](https://inclusive.tki.org.nz/guides/universal-design-for-learning/refine-and-support-goal-setting-2)

---

## Check for hidden barriers

Barriers to achievement can be hidden in the way we communicate goals or learning intentions.

Example of an assignment:

*Students will be able to write a report about how ways to increase birdlife at school.*

This is two tasks in one: **write** a report and **demonstrate** understanding about birdlife in the local area.

When setting goals (intentions):

- identify the purpose and make explicit what will be assessed
- check for hidden barriers to achievement
- if possible offer students flexible ways to demonstrate understanding
- if a skill such as “write” is included in the goal, ensure supports such as text-to-speech, graphic organisers, word prediction are offered to all students.

Inclusive Education

From

Guide: [Universal Design for Learning](#)

Strategy: [Design considerations in primary settings](#)

Suggestion: [Refine and support goal setting](#)

Date

29 August 2025

Link

[inclusive.tki.org.nz/guides/universal-design-for-learning/refine-and-support-goal-setting-2](https://inclusive.tki.org.nz/guides/universal-design-for-learning/refine-and-support-goal-setting-2)

---

## Reflection questions

Consider these questions for your own context.

How do I present learning goals and objectives in varied and flexible ways to support engagement and understanding?

How do I ensure students understand the purpose AND value of an activity?

How do I make sure students don't confuse the goal with the means of achieving it?

How do I offer varied and flexible pathways to success?

[Inclusive Education](#)

From

Guide: [Universal Design for Learning](#)

Strategy: [Design considerations in primary settings](#)

Suggestion: [Refine and support goal setting](#)

Date

29 August 2025

Link

[inclusive.tki.org.nz/guides/universal-design-for-learning/refine-and-support-goal-setting-2](https://inclusive.tki.org.nz/guides/universal-design-for-learning/refine-and-support-goal-setting-2)

---

## Useful resources



### Top 10 UDL tips for developing learning goals

A downloadable PDF from CAST with ten tips about learning goals from a UDL perspective

[Download](#) PDF

This information was downloaded/printed from the Ministry of Education's website "Inclusive Education". Except where otherwise noted it is Crown Copyright 2018.

Information on the Inclusive Education website is regularly updated so we recommend you check the website version of this information to ensure it remains current.