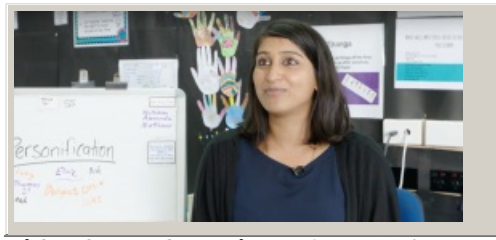


Knowledge of students influences design decisions

Anita Patel describes how UDL thinking has influenced her practice.



Video hosted on Vimeo <http://vimeo.com/220585051>

Closed Captions

Source:

[Ministry of Education, inclusive education videos \(NZ\)](https://vimeo.com/album/2950799)
<https://vimeo.com/album/2950799>

This information was downloaded/printed from the Ministry of Education's website "Inclusive Education". Except where otherwise noted it is Crown Copyright 2018.

Information on the Inclusive Education website is regularly updated so we recommend you check the website version of this information to ensure it remains current.

