

Inclusive Education

From

Guide: [The role of school boards](#)

Strategy: [Understand inclusive education](#)

Suggestion: [Identify what makes an inclusive school](#)

Date

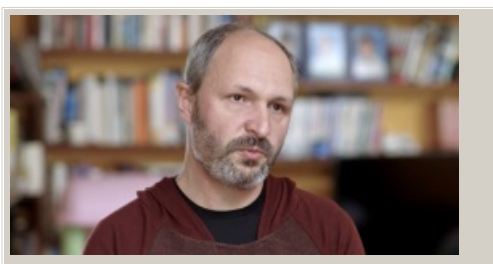
28 August 2025

Link

inclusive.tki.org.nz/guides/the-role-of-school-boards/identify-what-makes-an-inclusive-school

Commit to inclusion

The board chairperson at Berhampore School talks about their expectation that every child will be included socially and in the learning.



Video hosted on Vimeo <http://vimeo.com/159138180>

Closed Captions

Source:

[Ministry of Education, Inclusive Education videos \(NZ\)](#)

<https://vimeo.com/album/2950799>

This information was downloaded/printed from the Ministry of Education's website "Inclusive Education". Except where otherwise noted it is Crown Copyright 2018.

Information on the Inclusive Education website is regularly updated so we recommend you check the website version of this information to ensure it remains current.

