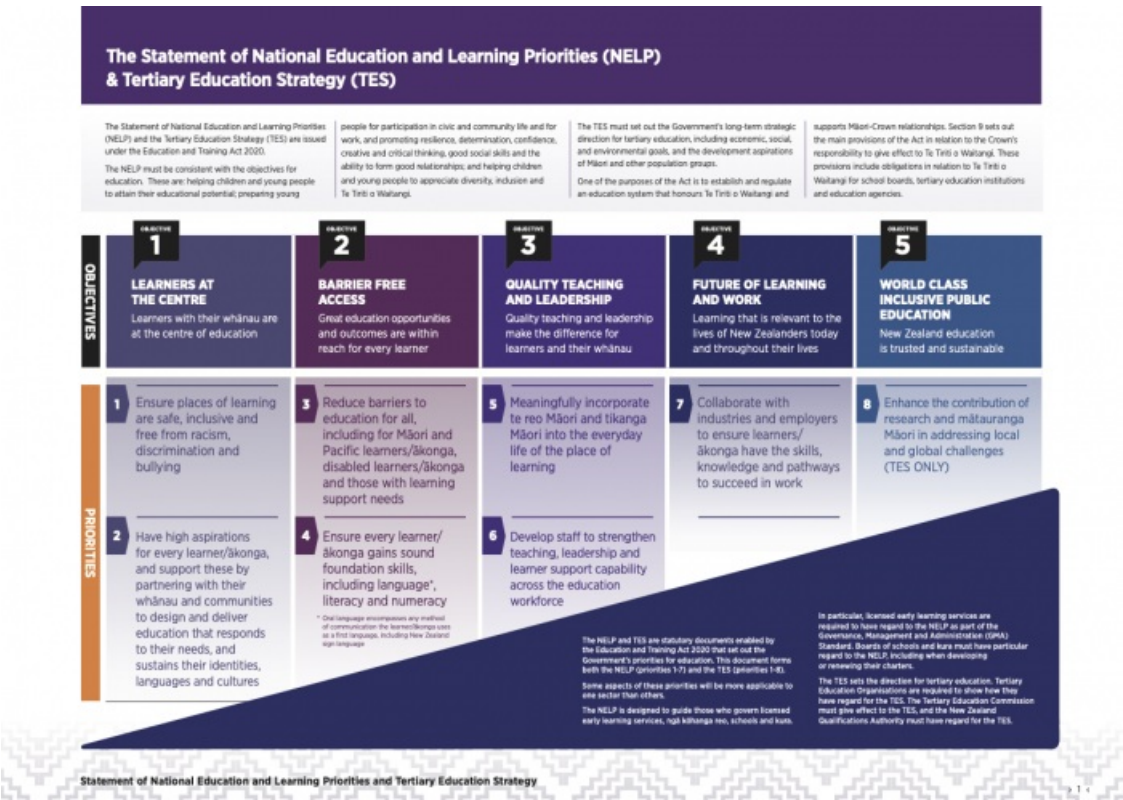


# Access and participation for every learner



Source:  
The Statement of National Education and Learning Priorities – Te Tāhuhu o te Mātauranga | Ministry of Education  
<https://assets.education.govt.nz/public/Documents/NELP-TES-documents/FULL-NELP-2020.pdf>  
[View full image \(362 KB\)](#)

This information was downloaded/printed from the Ministry of Education's website "Inclusive Education". Except where otherwise noted it is Crown Copyright 2018.

Information on the Inclusive Education website is regularly updated so we recommend you check the website version of this information to ensure it remains current.

