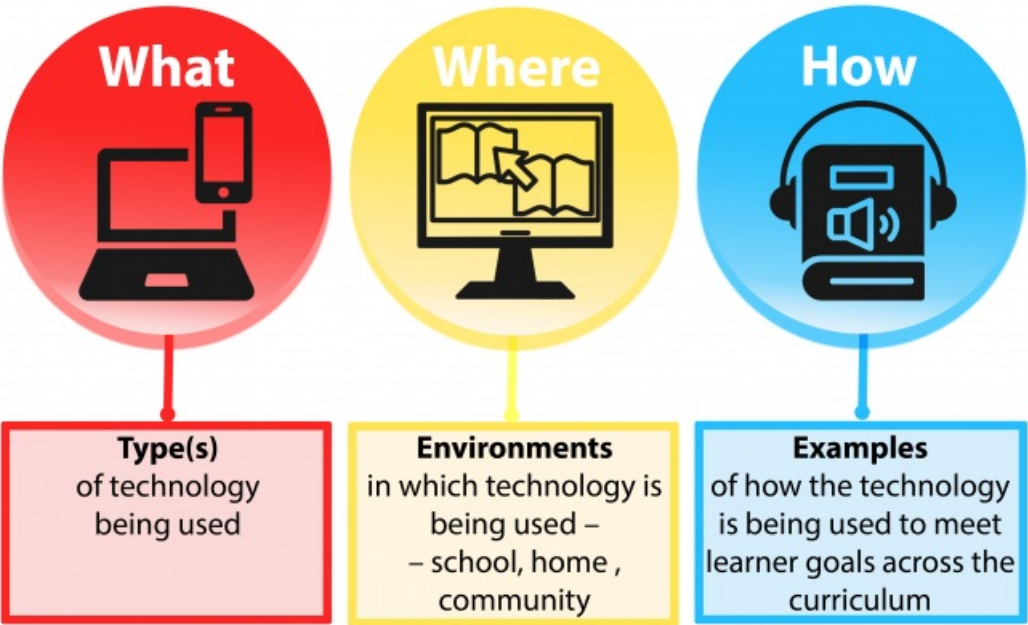


# Create individualised plans

Collaborate with the learner, whānau, and teaching team to gather information in three key areas



Source:  
Ministry of Education | Te Tāhuhu o te Mātauranga

[View full image \(535 KB\)](#)

This information was downloaded/printed from the Ministry of Education's website "Inclusive Education". Except where otherwise noted it is Crown Copyright 2018.

Information on the Inclusive Education website is regularly updated so we recommend you check the website version of this information to ensure it remains current.

