

Offer a range of supports

A suggestion for implementing the strategy

'Using low-technology options' from the

Guide: [Technology tools for learning](#)

-
- Includes:**
- Environmental considerations
 - Offer useful supports
 - Light and sound
 - Give support with visuals
 - Offer a range of tools
 - Utilise learner profiles

Inclusive Education

From

Guide: [Technology tools for learning](#)

Strategy: [Using low-technology options](#)

Suggestion: [Offer a range of supports](#)

Date

26 June 2026

Link

inclusive.tki.org.nz/guides/technology-tools-for-learning/offer-a-range-of-supports

Environmental considerations

Making small changes to the learning environment is another way to increase learner participation and access.

In your design, consider:

- where learners are positioned in relation to the teacher, the whiteboard, or classroom screens
- the height of tables or desks
- access to flexible learning spaces, for example, quiet areas, groups tables, and independent work areas
- work spaces that are quiet and have low stimulus
- clear labels for areas and equipment
- the visibility and accessibility of key information, for example, timetables and resource links
- the ease of access to key equipment and resources, for example, height-appropriate storage shelves, uncluttered pathways, and access to power points.

[Inclusive Education](#)

From

Guide: [Technology tools for learning](#)

Strategy: [Using low-technology options](#)

Suggestion: [Offer a range of supports](#)

Date

26 June 2026

Link

inclusive.tki.org.nz/guides/technology-tools-for-learning/offer-a-range-of-supports

Offer useful supports

Try small, inexpensive equipment.

Always consider the needs and sensitivities of your learners before introducing any supports.

Offer supports to everyone, such as:

- fidget tools for concentration
- [reading rulers](#) to highlight single lines of text
- sticky notes or removable [Post-it flags](#) to mark important words or sections of text
- calculators
- magnifiers
- [slope boards](#)
- coloured pencils and felt-tipped pens
- pencil grips to support fine motor control
- headphones
- earmuffs to reduce noise
- [timers](#)
- [inflatable seat cushions](#).

[Inclusive Education](#)

From

Guide: [Technology tools for learning](#)

Strategy: [Using low-technology options](#)

Suggestion: [Offer a range of supports](#)

Date

26 June 2026

Link

inclusive.tki.org.nz/guides/technology-tools-for-learning/offer-a-range-of-supports

Light and sound

Check to see if adjusting the lighting or room acoustics helps.

- ✓ Minimise shadows and glare on whiteboards and screens.
- ✓ Increase contrast (it is best to present materials on backgrounds that make objects stand out).
- ✓ Use black or blue whiteboard pens to maintain high contrast.
- ✓ Minimise background noise (such as the noise of computers, heating and ventilation systems, fish tanks, and other learners).
- ✓ Minimise background noise outside the classroom (such as traffic noise, playground noise, noise from other classrooms, and rain).

Inclusive Education

From

Guide: [Technology tools for learning](#)

Strategy: [Using low-technology options](#)

Suggestion: [Offer a range of supports](#)

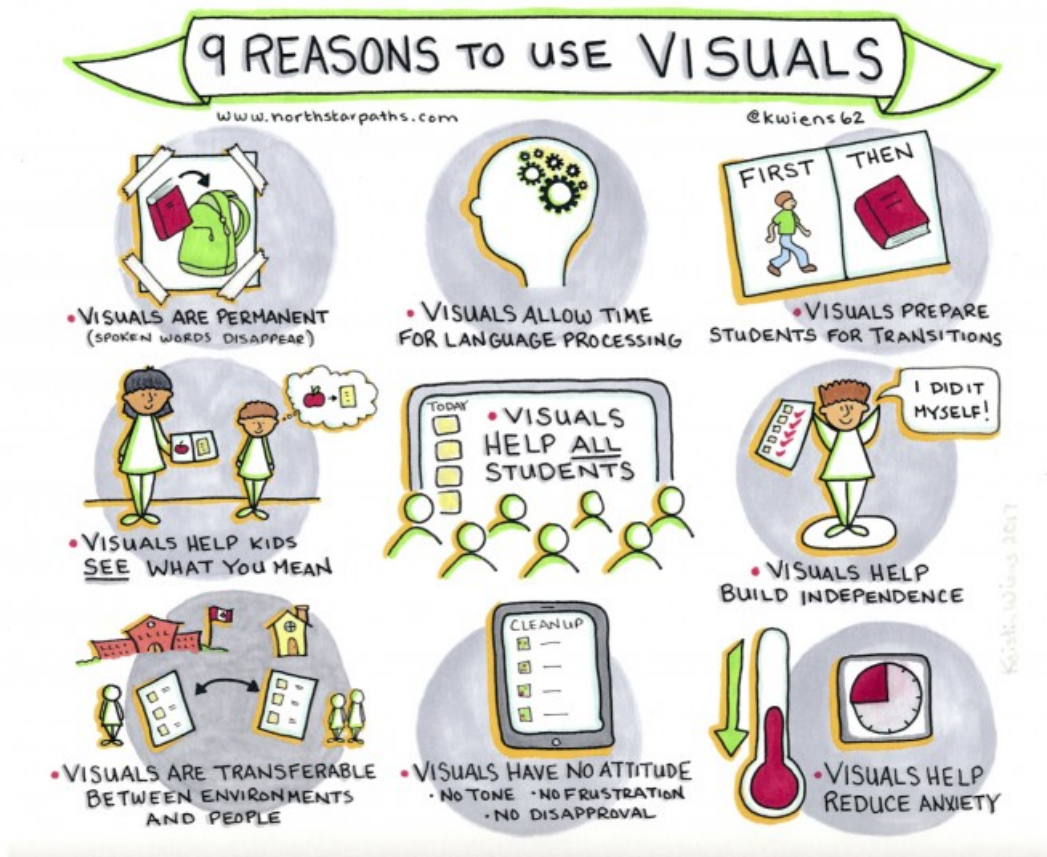
Date

26 June 2026

Link

inclusive.tki.org.nz/guides/technology-tools-for-learning/offer-a-range-of-supports

Give support with visuals



Source:

[North Star Paths](#)

<http://northstarpaths.com/>

[View full image \(1.5 MB\)](#)

Inclusive Education

From

Guide: [Technology tools for learning](#)

Strategy: [Using low-technology options](#)

Suggestion: [Offer a range of supports](#)

Date

26 June 2026

Link

inclusive.tki.org.nz/guides/technology-tools-for-learning/offer-a-range-of-supports

Offer a range of tools



Source:

Ministry of Education | Te Tāhuhu o te Mātauranga

[View full image \(501 KB\)](#)

Inclusive Education

From

Guide: [Technology tools for learning](#)

Strategy: [Using low-technology options](#)

Suggestion: [Offer a range of supports](#)

Date

26 June 2026

Link

inclusive.tki.org.nz/guides/technology-tools-for-learning/offer-a-range-of-supports

Utilise learner profiles



Source:

Ministry of Education | Te Tāhuhu o te Mātauranga

[View full image \(1.2 MB\)](#)

This information was downloaded/printed from the Ministry of Education's website "Inclusive Education". Except where otherwise noted it is Crown Copyright 2018.

Information on the Inclusive Education website is regularly updated so we recommend you check the website version of this information to ensure it remains current.