

Inclusive practice: Early years to primary | Te whare kōhungahunga ki te kura

A suggestion for implementing the strategy

'Prepare your environment | Te whakarite

wāhi ako' from the Guide: [Te Ara Ako –](#)

[Learning pathways in times of change](#)

Includes:

Whakataukī

Why this matters | Te take

Sensory supports | Ngā taituarā tairongo

Routines and breaks | Ngā mahi me ngā wā whakatā

Plan, teach and assess collaboratively | Te whakamahere me te aromatawai

Possibilities in new roles | Ngā āheitanga

Useful resources | He rauemi

Inclusive Education

From

Guide: [Te Ara Ako – Learning pathways in times of change](#)

Strategy: [Prepare your environment | Te whakarite wāhi ako](#)

Suggestion: [Inclusive practice: Early years to primary | Te whare kōhungahunga ki te kura](#)

Date

15 June 2026

Link

inclusive.tki.org.nz/guides/te-ara-ako-learning-pathways-in-times-of-change/inclusive-practice-early-years-to-primary-te-whare-kohungahunga-ki-te-kura

Whakataukī

Inclusive Education

From

Guide: [Te Ara Ako – Learning pathways in times of change](#)

Strategy: [Prepare your environment | Te whakarite wāhi ako](#)

Suggestion: [Inclusive practice: Early years to primary | Te whare kōhungahunga ki te kura](#)

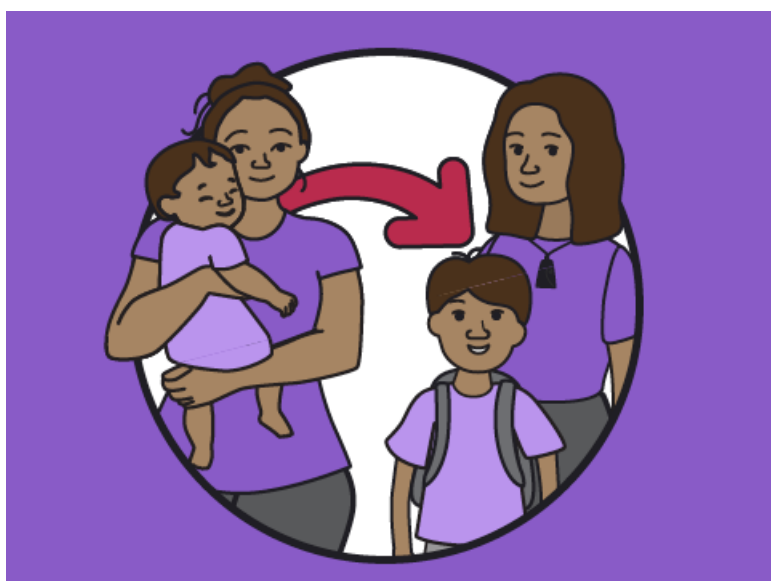
Date

15 June 2026

Link

inclusive.tki.org.nz/guides/te-ara-ako-learning-pathways-in-times-of-change/inclusive-practice-early-years-to-primary-te-whare-kohungahunga-ki-te-kura

Why this matters | Te take



[View full image \(218 KB\)](#)

Inclusive Education

From

Guide: [Te Ara Ako – Learning pathways in times of change](#)

Strategy: [Prepare your environment | Te whakarite wāhi ako](#)

Suggestion: [Inclusive practice: Early years to primary | Te whare kōhungahunga ki te kura](#)

Date

15 June 2026

Link

inclusive.tki.org.nz/guides/te-ara-ako-learning-pathways-in-times-of-change/inclusive-practice-early-years-to-primary-te-whare-kohungahunga-ki-te-kura

Sensory supports | Ngā taituarā tairongo

Many students find school environments and teaching methods challenging. We can set ākongā up for success by creating sensory-friendly spaces and choosing pedagogical practices that increase focus and engagement.



Video hosted on Youtube <http://youtu.be/LkaXauVLPgs>

Closed Captions

Inclusive Education

From

Guide: [Te Ara Ako – Learning pathways in times of change](#)

Strategy: [Prepare your environment](#) | [Te whakarite wāhi ako](#)

Suggestion: [Inclusive practice: Early years to primary](#) | [Te whare kōhungahunga ki te kura](#)

Date

15 June 2026

Link

inclusive.tki.org.nz/guides/te-ara-ako-learning-pathways-in-times-of-change/inclusive-practice-early-years-to-primary-te-whare-kohungahunga-ki-te-kura

Routines and breaks | Ngā mahi me ngā wā whakatā

Support student success with a flexible approach.

Consider how you will set up routines:

- Create small, achievable tasks that appeal to sensory interests.
- Use your observation data from the previous setting to make the transition into the new space as smooth as possible.
- Offering regular break times that appeal to ākongā learning needs is crucial.
- Notice which parts of the day and learning experiences are more challenging and plan ahead for break times. Identify which areas of the curriculum are ākongā strengths.
- Be flexible in your daily routines. There is a lot of adjustment for ākongā.
- Keep the vision of whānau in mind when setting up routines and daily learning programmes.

Inclusive Education

From

Guide: [Te Ara Ako – Learning pathways in times of change](#)

Strategy: [Prepare your environment | Te whakarite wāhi ako](#)

Suggestion: [Inclusive practice: Early years to primary | Te whare kōhungahunga ki te kura](#)

Date

15 June 2026

Link

inclusive.tki.org.nz/guides/te-ara-ako-learning-pathways-in-times-of-change/inclusive-practice-early-years-to-primary-te-whare-kohungahunga-ki-te-kura

Plan, teach and assess collaboratively | Te whakamahere me te aromatawai

- ✓ **Meet regularly across the wider team** – encourage your teaching team to plan a curriculum that is inclusive of ākonga strengths and is informed by whānau identity and vision, school resources, and social groups.
- ✓ **Provide flexibility with assessment** – some assessments may require extra teacher release time. Some assessments may be used that are different from mainstream methods. Apply tools that use what you know about your learner and allow them to “show what they know”.
- ✓ **Integrate choice** – the best learning offers choice within every aspect of a learning programme.
- ✓ **Integrate and use relationships** – provide opportunities for peers to be involved in the learning experience.
- ✓ **Consider sensory needs** – these may include: breakout or quiet spaces, wait time (up to 5 minutes), teacher talk vs. activities, visual tools, interactive digital communication tools, music and movement, games and play equipment.
- ✓ **Use shared digital tools** – digital platforms help keep track of goals, progress, and communication.

[Inclusive Education](#)

From

Guide: [Te Ara Ako – Learning pathways in times of change](#)

Strategy: [Prepare your environment | Te whakarite wāhi ako](#)

Suggestion: [Inclusive practice: Early years to primary | Te whare kōhungahunga ki te kura](#)

Date

15 June 2026

Link

inclusive.tki.org.nz/guides/te-ara-ako-learning-pathways-in-times-of-change/inclusive-practice-early-years-to-primary-te-whare-kohungahunga-ki-te-kura

Possibilities in new roles | Ngā āheitanga



[View full image \(78 KB\)](#)

Inclusive Education

From

Guide: [Te Ara Ako – Learning pathways in times of change](#)

Strategy: [Prepare your environment | Te whakarite wāhi ako](#)

Suggestion: [Inclusive practice: Early years to primary | Te whare kōhungahunga ki te kura](#)

Date

15 June 2026

Link

inclusive.tki.org.nz/guides/te-ara-ako-learning-pathways-in-times-of-change/inclusive-practice-early-years-to-primary-te-whare-kohungahunga-ki-te-kura

Useful resources | He rauemi



Collaborative planning guide

This Inclusive Education guide provides strategies and guidance for planning together as a team, inclusive of whānau and their aspirations for their child.

[Visit website](#)

This information was downloaded/printed from the Ministry of Education's website "Inclusive Education". Except where otherwise noted it is Crown Copyright 2018.

Information on the Inclusive Education website is regularly updated so we recommend you check the website version of this information to ensure it remains current.