

Enable social supports | Ngā taituarā pāpori

A suggestion for implementing the strategy
'Develop ākonga partnerships | Te mahi tahi
me ngā ākonga' from the Guide: [Te Ara Ako –
Learning pathways in times of change](#)

Includes:

Whakataukī

Why this matters | Te take

Determine current social systems | Ngā tukanga pāpori

Address social concerns early | Te whakatau nawe

Align with student interests | Ngā aronga o ngā ākonga

Create community | Te whai hapori

Useful resources | He rauemi

Inclusive Education

From

Guide: [Te Ara Ako – Learning pathways in times of change](#)

Strategy: [Develop ākongā partnerships | Te mahi tahi me ngā ākongā](#)

Suggestion: [Enable social supports | Ngā taituarā pāpori](#)

Date

15 June 2026

Link

inclusive.tki.org.nz/guides/te-ara-ako-learning-pathways-in-times-of-change/enable-social-supports-nga-taituara-papori

Whakataukī

Inclusive Education

From

Guide: [Te Ara Ako – Learning pathways in times of change](#)

Strategy: [Develop ākongā partnerships | Te mahi tahi me ngā ākongā](#)

Suggestion: [Enable social supports | Ngā taituarā pāpori](#)

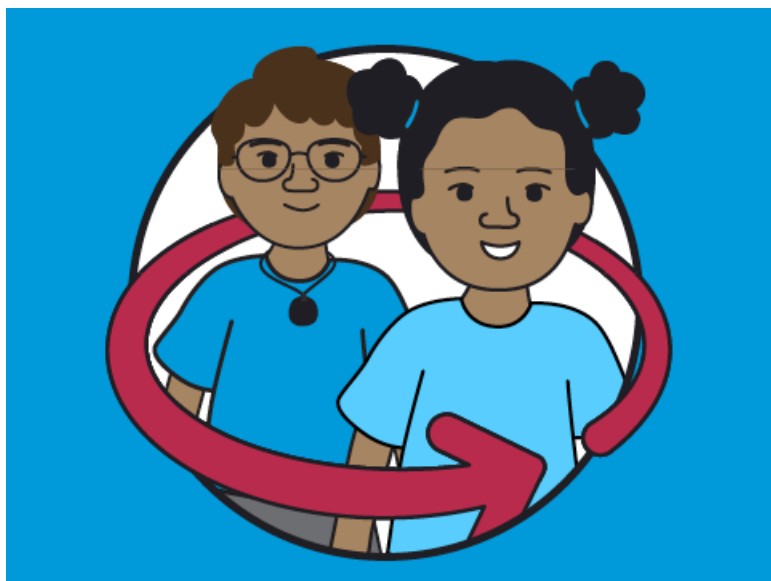
Date

15 June 2026

Link

inclusive.tki.org.nz/guides/te-ara-ako-learning-pathways-in-times-of-change/enable-social-supports-nga-taituara-papori

Why this matters | Te take



[View full image \(14 KB\)](#)

[Inclusive Education](#)

From

Guide: [Te Ara Ako – Learning pathways in times of change](#)

Strategy: [Develop ākongā partnerships | Te mahi tahi me ngā ākongā](#)

Suggestion: [Enable social supports | Ngā taituarā pāpori](#)

Date

15 June 2026

Link

inclusive.tki.org.nz/guides/te-ara-ako-learning-pathways-in-times-of-change/enable-social-supports-nga-taituara-papori

Determine current social systems | Ngā tukanga pāpori



[View full image \(81 KB\)](#)

Identify existing buddy support systems, peer groups, and break times in the current school setting. Ask whether these contribute to a culture of care and belonging for ākongā and whānau.

Inclusive Education

From

Guide: [Te Ara Ako – Learning pathways in times of change](#)

Strategy: [Develop ākongā partnerships | Te mahi tahi me ngā ākongā](#)

Suggestion: [Enable social supports | Ngā taituarā pāpori](#)

Date

15 June 2026

Link

inclusive.tki.org.nz/guides/te-ara-ako-learning-pathways-in-times-of-change/enable-social-supports-nga-taituara-papori

Address social concerns early | Te whakatau nawe

- ✓ By modelling and supporting a culture of care, greater ākongā security and safety between ākongā can be generated.
- ✓ Consult with whānau about what has worked well for their child. Set up mentoring or buddy systems, such as [tuakana-teina](#), before transition. This could include scaffolded interactions during transition visits.
- ✓ Be mindful of the power of language – both verbal and non-verbal. Gestures, body language and how we approach particular ākongā all send subtle signals to children about how we feel towards them.

[Inclusive Education](#)

From

Guide: [Te Ara Ako – Learning pathways in times of change](#)

Strategy: [Develop ākonga partnerships | Te mahi tahi me ngā ākonga](#)

Suggestion: [Enable social supports | Ngā taituarā pāpori](#)

Date

15 June 2026

Link

inclusive.tki.org.nz/guides/te-ara-ako-learning-pathways-in-times-of-change/enable-social-supports-nga-taituara-papori

Align with student interests | Ngā aronga o ngā ākonga



[View full image \(113 KB\)](#)

Inclusive Education

From

Guide: [Te Ara Ako – Learning pathways in times of change](#)

Strategy: [Develop ākongā partnerships | Te mahi tahi me ngā ākongā](#)

Suggestion: [Enable social supports | Ngā taituarā pāpori](#)

Date

15 June 2026

Link

inclusive.tki.org.nz/guides/te-ara-ako-learning-pathways-in-times-of-change/enable-social-supports-nga-taituara-papori

Create community | Te whai hapori

Each ākongā will be a part of a unique classroom community within their school.

Identify ways to strengthen and build this sense of community with other learners:

- Educate others in the class through Q&A sessions and presentations.
- Model specific ways other students can include ākongā.
- Challenge yourself, kaiako, and students to become aware of their own biases.
- Model having open conversations that are student-led about concerns, fears and issues as they may have as they arise.

Inclusive Education

From

Guide: [Te Ara Ako – Learning pathways in times of change](#)

Strategy: [Develop ākongā partnerships | Te mahi tahi me ngā ākongā](#)

Suggestion: [Enable social supports | Ngā taituarā pāpori](#)

Date

15 June 2026

Link

inclusive.tki.org.nz/guides/te-ara-ako-learning-pathways-in-times-of-change/enable-social-supports-nga-taituara-papori

Useful resources | He rauemi



Action research on a tuakana-teina approach

This video outlines the results of research undertaken by Tātai Aho Rau Core Education in partnership with Rātā Foundation to make a difference to the transition to school experiences of all tamariki in Ōtautahi. This video documents the tukana-teina buddy system.

Publisher: Tātai Aho Rau Core Education

[Visit website](#)

This information was downloaded/printed from the Ministry of Education's website "Inclusive Education". Except where otherwise noted it is Crown Copyright 2018.

Information on the Inclusive Education website is regularly updated so we recommend you check the website version of this information to ensure it remains current.