

Value parent and community expertise and networks

A suggestion for implementing the strategy
'Build community networks' from the Guide:

[Supporting Pacific learners](#)

Includes:

Connect parents with each other

Pasifika Parent Group

Pasifika Autism Support Group

Accessible youth space

Understand diverse perspectives

Inclusive Education

From

Guide: [Supporting Pacific learners](#)

Strategy: [Build community networks](#)

Suggestion: [Value parent and community expertise and networks](#)

Date

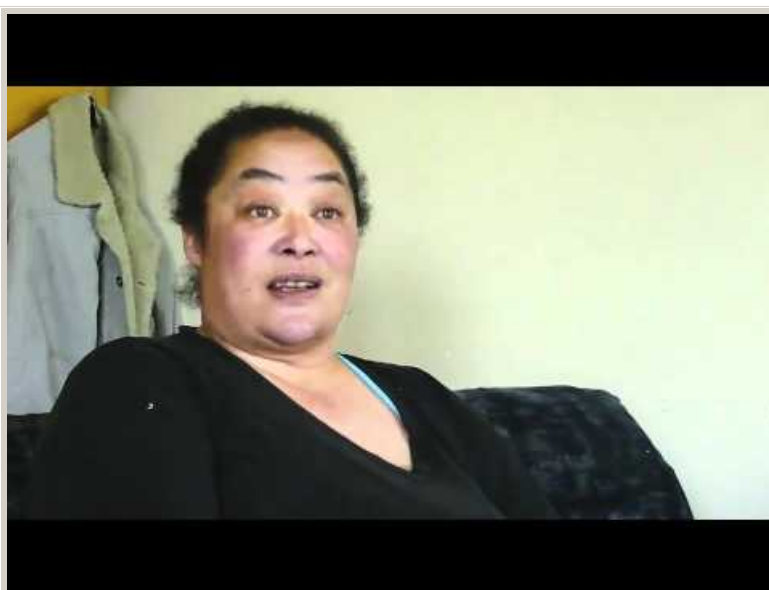
27 April 2024

Link

inclusive.tki.org.nz/guides/supporting-pacific-learners/value-parent-and-community-expertise-and-networks

Connect parents with each other

Parent, Sharon Beattie shares her knowledge and experiences of what helped her to support her son with low vision in his learning.



Video hosted on Youtube http://youtu.be/41ZZ3_3pXIU

Closed Captions

Source:

[BLENNZ \(NZ\)](#)

https://www.youtube.com/watch?v=41ZZ3_3pXIU

Inclusive Education

From

Guide: [Supporting Pacific learners](#)

Strategy: [Build community networks](#)

Suggestion: [Value parent and community expertise and networks](#)

Date

27 April 2024

Link

inclusive.tki.org.nz/guides/supporting-pacific-learners/value-parent-and-community-expertise-and-networks

Pasifika Parent Group

Manu Fa'aea-Semeatu shares the impact that the school Pasifika Parent Group had on creating a sense of ownership and connection for Pasifika families within the school.



Video hosted on Vimeo <http://vimeo.com/66881385>

[View transcript](#)

Source:

EDtalks (NZ)

<http://edtalks.org/#/video/school-management-and-cultural-responsiveness>

Inclusive Education

From

Guide: [Supporting Pacific learners](#)

Strategy: [Build community networks](#)

Suggestion: [Value parent and community expertise and networks](#)

Date

27 April 2024

Link

inclusive.tki.org.nz/guides/supporting-pacific-learners/value-parent-and-community-expertise-and-networks

Pasifika Autism Support Group



Source:

[Pasifika Autism Support Group](#)

<http://www.asdpasifika.org.nz/>

[View full image \(178 KB\)](#)

Inclusive Education

From

Guide: [Supporting Pacific learners](#)

Strategy: [Build community networks](#)

Suggestion: [Value parent and community expertise and networks](#)

Date

27 April 2024

Link

inclusive.tki.org.nz/guides/supporting-pacific-learners/value-parent-and-community-expertise-and-networks

Accessible youth space



Source:

PHAB

<http://www.phab.org.nz/>

[View full image \(71 KB\)](#)

Inclusive Education

From

Guide: [Supporting Pacific learners](#)

Strategy: [Build community networks](#)

Suggestion: [Value parent and community expertise and networks](#)

Date

27 April 2024

Link

inclusive.tki.org.nz/guides/supporting-pacific-learners/value-parent-and-community-expertise-and-networks

Understand diverse perspectives

Where parent and family values, and expectations, differ from those of your school, create opportunities to listen and learn from each other.

- ✓ Create opportunities to connect Pacific parents with other Pacific parents and community leaders to talk about ways to support their children's learning.
- ✓ Invite parents and families to see inclusive practices in action at your school. Offer opportunities to discuss what they have seen in their first languages.
- ✓ Invite back to school, Pacific students who have left, to share their experiences of what kinds of things supported them in their learning.

This information was downloaded/printed from the Ministry of Education's website "Inclusive Education". Except where otherwise noted it is Crown Copyright 2018.

Information on the Inclusive Education website is regularly updated so we recommend you check the website version of this information to ensure it remains current.