

Strengthen Pacific community engagement to support student learning

A suggestion for implementing the strategy
'Build community networks' from the Guide:
[Supporting Pacific learners](#)

-
- Includes:**
- Create a dedicated parent space
 - Support information sharing
 - Support parental engagement
 - Support engagement in learning
 - Foster pastoral care
 - Participate in cultural events

Inclusive Education

From

Guide: [Supporting Pacific learners](#)

Strategy: [Build community networks](#)

Suggestion: [Strengthen Pacific community engagement to support student learning](#)

Date

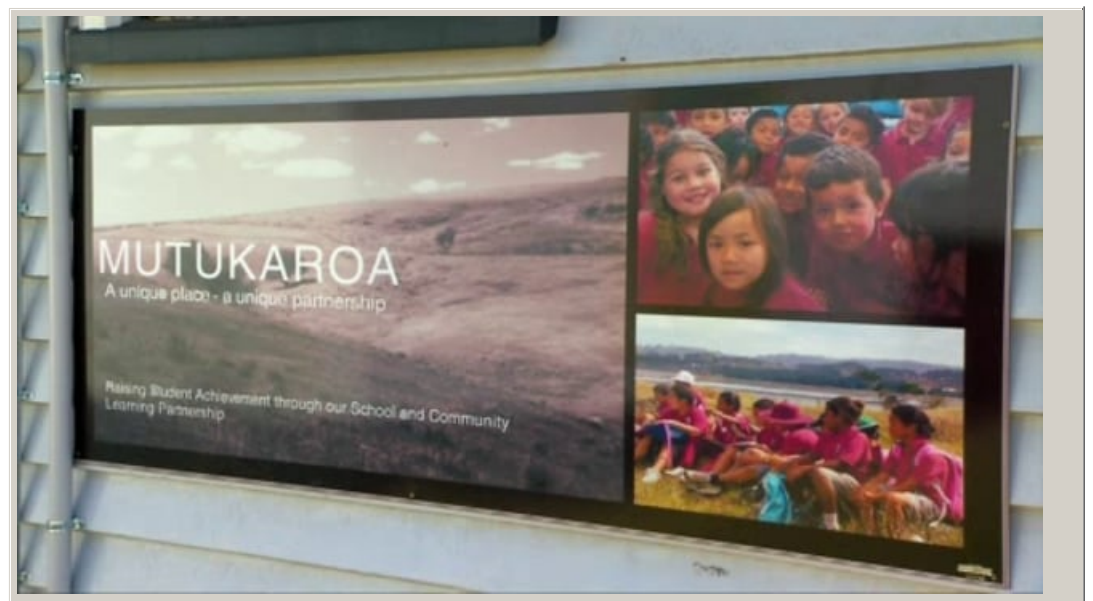
25 February 2024

Link

inclusive.tki.org.nz/guides/supporting-pacific-learners/strengthen-pacific-community-engagement-to-support-student-learning

Create a dedicated parent space

Sylvia Park School created a parents' centre where parents can meet to talk about their children's learning and achievement.



Video hosted on Vimeo <http://vimeo.com/113879058>

[View transcript](#)

Source:

[Pasifika Education Community \(NZ\)](http://pasifika.tki.org.nz)

<http://pasifika.tki.org.nz/Media-gallery/Engaging-with-Pasifika-parents-families-communities/Sylvia-Parks-Parents-Centre>

Inclusive Education

From

Guide: [Supporting Pacific learners](#)

Strategy: [Build community networks](#)

Suggestion: [Strengthen Pacific community engagement to support student learning](#)

Date

25 February 2024

Link

inclusive.tki.org.nz/guides/supporting-pacific-learners/strengthen-pacific-community-engagement-to-support-student-learning

Support information sharing

Model your commitment to inclusion in the way your school shares information with families and the wider community.

- Use a variety of communication methods, including face-to-face communication, newsletters translated into Pacific languages, telephone contact, and home-school communication notebooks.
- Include illustrated success stories about all students.
- Share ongoing stories of your school's commitment to inclusive practices and next steps.
- Make materials available in the languages of your school community.
- Ensure that written material is supported with graphics to support understanding.
- Clearly explain how parents can connect with teachers and support staff at your school to talk about their child.
- Offer digital and hard copy materials, so that families can select an access option that works best for them.
- Extend open invitations for parents to join the school parent and teacher group, and other groups they can belong and contribute to.

Inclusive Education

From

Guide: [Supporting Pacific learners](#)

Strategy: [Build community networks](#)

Suggestion: [Strengthen Pacific community engagement to support student learning](#)

Date

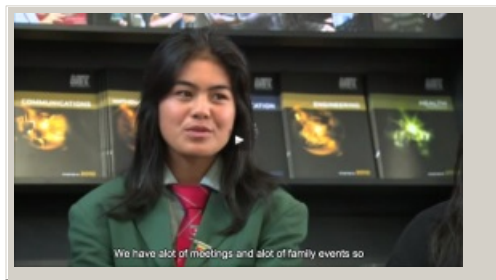
25 February 2024

Link

inclusive.tki.org.nz/guides/supporting-pacific-learners/strengthen-pacific-community-engagement-to-support-student-learning

Support parental engagement

Consider group seating arrangements, providing refreshments, and providing translations of written material or translators for discussions.



Video hosted on Vimeo <http://vimeo.com/113879057>

[View transcript](#)

Source:

[Pasifika Education Community \(NZ\)](#)

<http://pasifika.tki.org.nz/Media-gallery/Engaging-with-Pasifika-parents-families-communities/Parents-matter>

Inclusive Education

From

Guide: [Supporting Pacific learners](#)

Strategy: [Build community networks](#)

Suggestion: [Strengthen Pacific community engagement to support student learning](#)

Date

25 February 2024

Link

inclusive.tki.org.nz/guides/supporting-pacific-learners/strengthen-pacific-community-engagement-to-support-student-learning

Support engagement in learning

Explore the viewpoints of students, teachers, and parents on the involvement of parents and communities in schooling.



Video hosted on Vimeo <http://vimeo.com/113879053>

[View transcript](#)

Source:

[Pasifika Education Community \(NZ\)](http://pasifika.tki.org.nz/Media-gallery/Engaging-with-Pasifika-parents-families-communities/Involvement-and-Engagement)

<http://pasifika.tki.org.nz/Media-gallery/Engaging-with-Pasifika-parents-families-communities/Involvement-and-Engagement>

Inclusive Education

From

Guide: [Supporting Pacific learners](#)

Strategy: [Build community networks](#)

Suggestion: [Strengthen Pacific community engagement to support student learning](#)

Date

25 February 2024

Link

inclusive.tki.org.nz/guides/supporting-pacific-learners/strengthen-pacific-community-engagement-to-support-student-learning

Foster pastoral care

Clint Samaseia, discusses the pastoral support that Pacific learners need. He shares ways to develop community engagement to increase parental involvement.



Video hosted on Vimeo <http://vimeo.com/110323966>

Closed Captions

Source:

[EDtalks \(NZ\)](#)

<http://edtalks.org/#/video/pasifika-pedagogy>

Inclusive Education

From

Guide: [Supporting Pacific learners](#)

Strategy: [Build community networks](#)

Suggestion: [Strengthen Pacific community engagement to support student learning](#)

Date

25 February 2024

Link

inclusive.tki.org.nz/guides/supporting-pacific-learners/strengthen-pacific-community-engagement-to-support-student-learning

Participate in cultural events



Source:

[Richard Sihamau](#)

<https://flic.kr/p/4ypyJo>

[View full image \(211 KB\)](#)

This information was downloaded/printed from the Ministry of Education's website "Inclusive Education". Except where otherwise noted it is Crown Copyright 2018.

Information on the Inclusive Education website is regularly updated so we recommend you check the website version of this information to ensure it remains current.