

Useful resources



Pasifika Learners Context & Connections

In this video Ruth Davidson Toumu'a skilfully and succinctly explains connections and contexts that are critical to the identity and self-efficacy of Pacific learners.

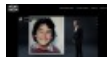
[Visit website](#)



From Good to Great: The 10 Habits of phenomenal educators for Pacific learners

The Full Report includes 11 case studies describing the phenomenal educators involved in the project. It outlines the methodology, which is built around an Appreciative Inquiry approach. It features student talanoa about their experiences with phenomenal educators and introduces the “Ten Habits” displayed by those educators.

[Visit website](#)



Unteach Racism

Empowering the profession to have safe and productive conversations about racism, that result in greater understanding and changes in behaviour and practice.

Publisher: Teaching Council of Aotearoa New Zealand

[Visit website](#)

This information was downloaded/printed from the Ministry of Education's website "Inclusive Education". Except where otherwise noted it is Crown Copyright 2018.

Information on the Inclusive Education website is regularly updated so we recommend you check the website version of this information to ensure it remains current.

