

Inclusive Education

From

Guide: [Supporting LGBTQIA+ students](#)

Strategy: [Address immediate environmental, physical and social needs](#)

Suggestion: [Respond to bullying](#)

Date

21 June 2026

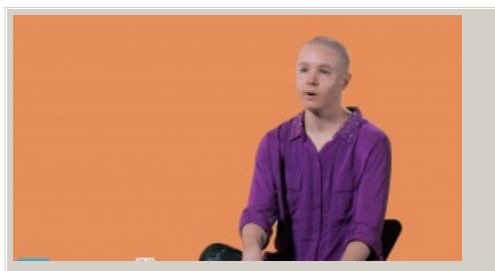
Link

[inclusive.tki.org.nz/guides/supporting-lgbtqia-students/respond-to-bullying](http://inclusive.tki.org.nz/guides/supporting-lgbtqia-students/respond-to-bullying)

---

## Understand homophobia and transphobia

Young people discuss their experiences of homophobic and transphobic bullying.



Video hosted on Vimeo <http://vimeo.com/138438756>

Closed Captions

**Source:**

[Inside Out – RainbowYOUTH \(NZ\)](#)

<http://insideout.ry.org.nz/>

This information was downloaded/printed from the Ministry of Education's website "Inclusive Education". Except where otherwise noted it is Crown Copyright 2018.

Information on the Inclusive Education website is regularly updated so we recommend you check the website version of this information to ensure it remains current.

---

