

Inclusive Education

From

Guide: [Supporting LGBTIQ+ students](#)

Strategy: [Design inclusive school-wide systems and processes](#)

Suggestion: [Support and resource sexuality and gender education](#)

Date

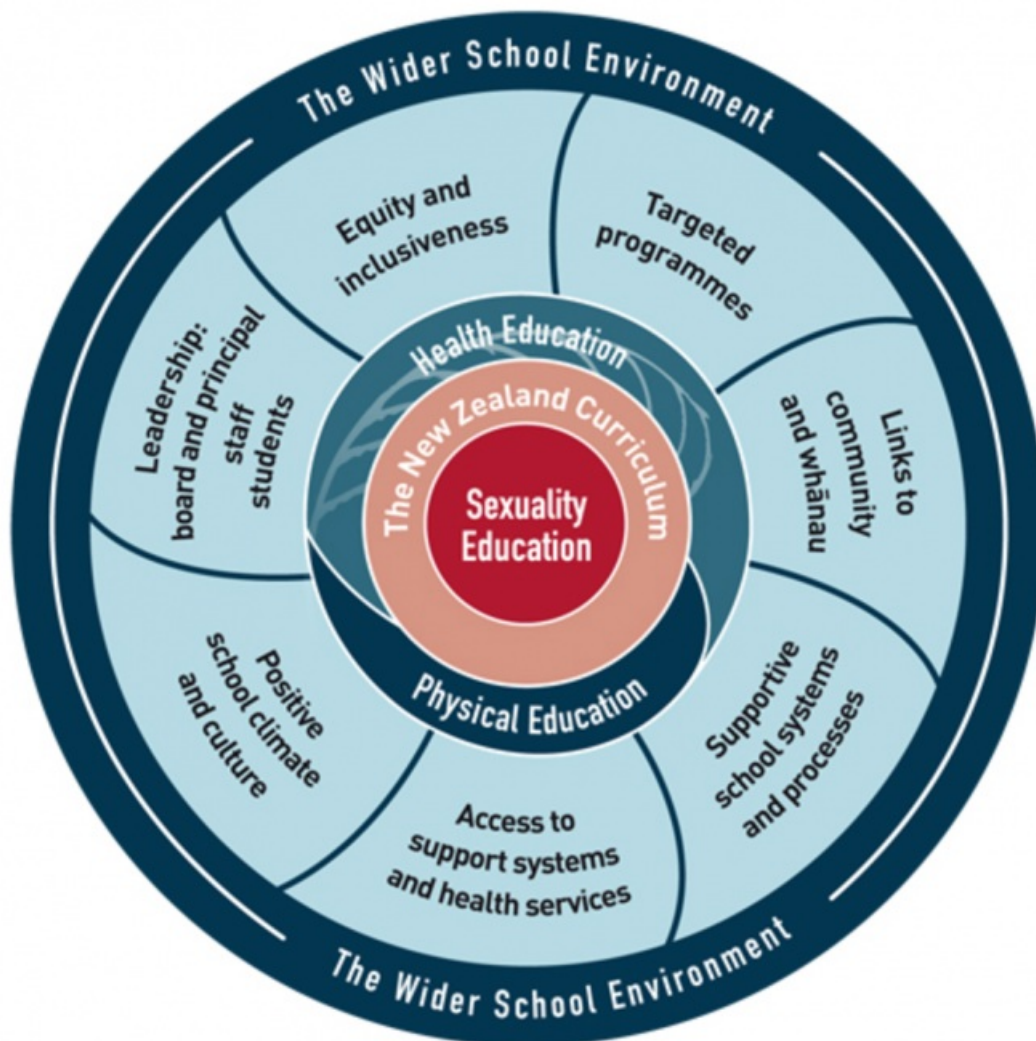
25 February 2024

Link

[inclusive.tki.org.nz/guides/supporting-lgbtiqa-students/support-and-resource-sexuality-and-gender-education](https://inclusive.tki.org.nz/guides/supporting-lgbtiqa-students/support-and-resource-sexuality-and-gender-education)

---

## Align policies to sexuality education guidelines



Source:

Ministry of Education | Te Tāhuhu o te Mātauranga

<https://parents.education.govt.nz/primary-school/learning-at-school/sexuality-education/>

[View full image \(976 KB\)](#)

---

This information was downloaded/printed from the Ministry of Education's website "Inclusive Education". Except where otherwise noted it is Crown Copyright 2018.

Information on the Inclusive Education website is regularly updated so we recommend you check the website version of this information to ensure it remains current.

---

