

# Support and resource sexuality and gender education

A suggestion for implementing the strategy 'Design inclusive school-wide systems and processes' from the Guide: [LGBTIQA+ students](#)

---

## **Includes:**

- Align policies to sexuality education guidelines
- Identify areas for discussion
- Offer as a subject option at all levels
- Develop community consultation cycle
- Review current approach
- Useful resources

Inclusive Education

From

Guide: [Supporting LGBTIQ+ students](#)

Strategy: [Design inclusive school-wide systems and processes](#)

Suggestion: [Support and resource sexuality and gender education](#)

Date

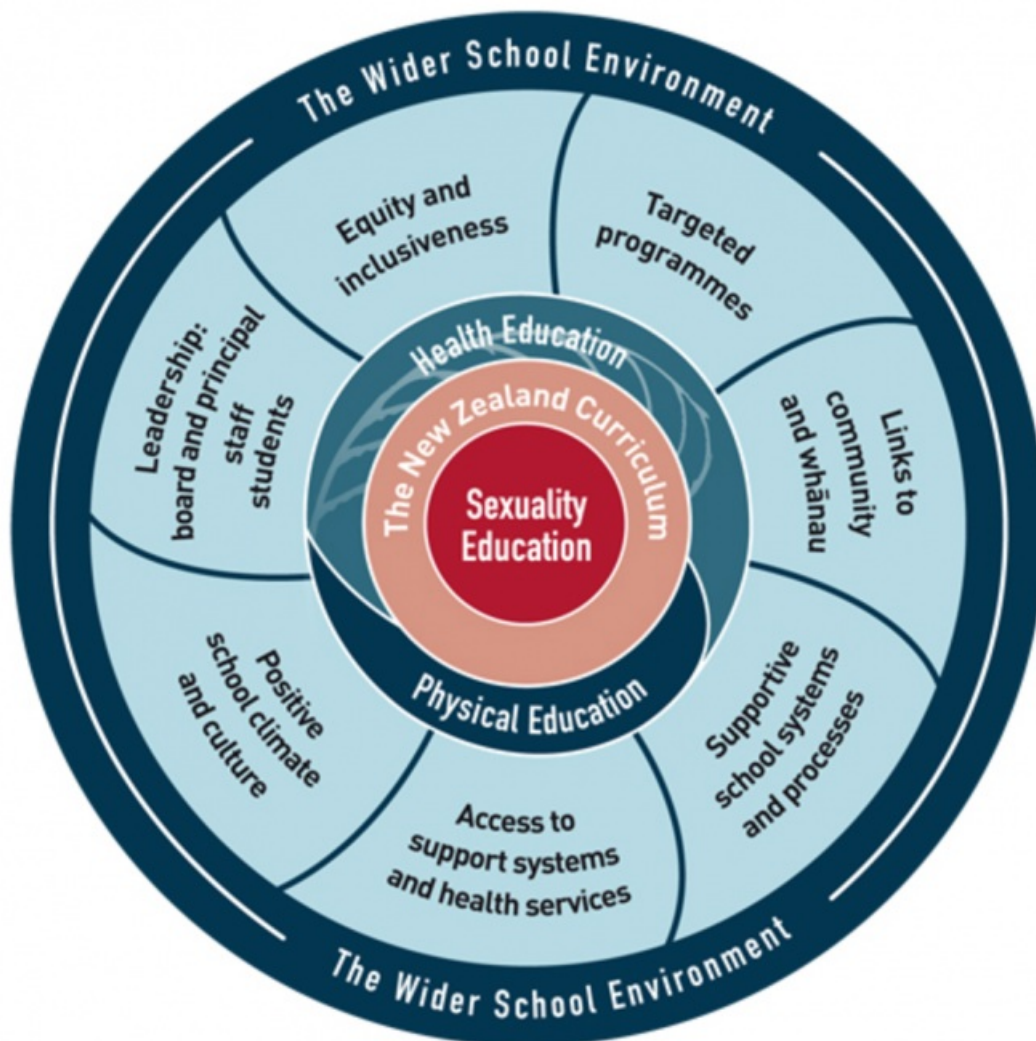
27 April 2024

Link

[inclusive.tki.org.nz/guides/supporting-lgbtqa-students/support-and-resource-sexuality-and-gender-education](https://inclusive.tki.org.nz/guides/supporting-lgbtqa-students/support-and-resource-sexuality-and-gender-education)

---

## Align policies to sexuality education guidelines



Source:

Ministry of Education | Te Tāhuhu o te Mātauranga

<https://parents.education.govt.nz/primary-school/learning-at-school/sexuality-education/>

[View full image \(976 KB\)](#)

## Inclusive Education

From

Guide: [Supporting LGBTIQ+ students](#)

Strategy: [Design inclusive school-wide systems and processes](#)

Suggestion: [Support and resource sexuality and gender education](#)

Date

27 April 2024

Link

[inclusive.tki.org.nz/guides/supporting-lgbtqa-students/support-and-resource-sexuality-and-gender-education](https://inclusive.tki.org.nz/guides/supporting-lgbtqa-students/support-and-resource-sexuality-and-gender-education)

---

# Identify areas for discussion

Create opportunities for students to investigate and explore:

- ✓ healthy relationships in multiple contexts
- ✓ expressing feelings and emotions
- ✓ supporting the wellbeing of friends and peers
- ✓ communication
- ✓ questioning messages related to gender, sexuality, and diversity
- ✓ identity and beliefs
- ✓ rights and responsibilities
- ✓ future dreams and goals
- ✓ physical and emotional development
- ✓ sexual and gender diversity
- ✓ human reproduction
- ✓ human rights
- ✓ consent
- ✓ choice and agency in relationships
- ✓ access to support and health care
- ✓ questioning and discussing gender and sexual stereotypes and norms, i.e. heteronormativity (assumptions of a monosexual heterosexual society)
- ✓ risks and issues in online and social media environments.

## Inclusive Education

From

Guide: [Supporting LGBTIQ+ students](#)

Strategy: [Design inclusive school-wide systems and processes](#)

Suggestion: [Support and resource sexuality and gender education](#)

Date

27 April 2024

Link

[inclusive.tki.org.nz/guides/supporting-lgbtika-students/support-and-resource-sexuality-and-gender-education](https://inclusive.tki.org.nz/guides/supporting-lgbtika-students/support-and-resource-sexuality-and-gender-education)

---

## Offer as a subject option at all levels

Develop a school-wide, shared approach when considering how sexuality can be taught across and within a range of subject areas.

To support gender and sexuality diverse students, ensure that health is a subject option at all levels in the school, especially at senior levels when relationships are more likely.

It is recommended that all students engage in sexuality education in years 11–13. This should not be limited to students completing NCEA courses and standards in health education.

Inclusive Education

From

Guide: [Supporting LGBTIQA+ students](#)

Strategy: [Design inclusive school-wide systems and processes](#)

Suggestion: [Support and resource sexuality and gender education](#)

Date

27 April 2024

Link

[inclusive.tki.org.nz/guides/supporting-lgbtiqa-students/support-and-resource-sexuality-and-gender-education](https://inclusive.tki.org.nz/guides/supporting-lgbtiqa-students/support-and-resource-sexuality-and-gender-education)

---

## Develop community consultation cycle



Source:

[Enabling e-Learning](#)

<https://elearning.tki.org.nz/Leadership/Strategic-thinking-roadmap/Engaging-with-parents>

[View full image \(3 MB\)](#)

## Inclusive Education

From

Guide: [Supporting LGBTIQA+ students](#)

Strategy: [Design inclusive school-wide systems and processes](#)

Suggestion: [Support and resource sexuality and gender education](#)

Date

27 April 2024

Link

[inclusive.tki.org.nz/guides/supporting-lgbtiqua-students/support-and-resource-sexuality-and-gender-education](https://inclusive.tki.org.nz/guides/supporting-lgbtiqua-students/support-and-resource-sexuality-and-gender-education)

---

## Review current approach

Common characteristics of successful sexuality education programmes include:

- ✓ respect for the diverse values and beliefs of students and of the community
- ✓ recognition of the physical, social, emotional, and spiritual dimensions of sexuality
- ✓ inclusion of students' perspectives and requests
- ✓ regular planning and review of sexuality programmes
- ✓ consultation with students about content and approach
- ✓ up-to-date resources that are appropriate and modified to meet the needs of students
- ✓ committed, confident teachers who are provided with LGBTIQA+ professional development opportunities
- ✓ respect for different cultural perspectives
- ✓ the use of assessment data, including student self-assessment, to review programme implementation
- ✓ an environment where students feel safe to ask questions
- ✓ an environment where there is a good rapport between teachers and students
- ✓ a strong culture of school-wide respect
- ✓ access to effective support networks for students.

## Inclusive Education

From

Guide: [Supporting LGBTIQ+ students](#)

Strategy: [Design inclusive school-wide systems and processes](#)

Suggestion: [Support and resource sexuality and gender education](#)

Date

27 April 2024

Link

[inclusive.tki.org.nz/guides/supporting-lgbtqa-students/support-and-resource-sexuality-and-gender-education](https://inclusive.tki.org.nz/guides/supporting-lgbtqa-students/support-and-resource-sexuality-and-gender-education)

---

## Useful resources



### Affirming diversity

A practical guide for teachers and other workers with youth to support them in creating safer environments for same-sex attracted and transgender young people.

Publisher: New Zealand Family Planning

Price: **One off charge \$40.00**

[Visit website](#)



### Sexuality education: Information for parents, families, and whānau

Read time: 4 min

This pamphlet summarises key points about current sexuality education in New Zealand schools.

[Visit website](#)

This information was downloaded/printed from the Ministry of Education's website "Inclusive Education". Except where otherwise noted it is Crown Copyright 2018.

Information on the Inclusive Education website is regularly updated so we recommend you check the website version of this information to ensure it remains current.