

Inclusive Education

From

Guide: [Supporting LGBTIQA+ students](#)

Strategy: [Design inclusive school-wide systems and processes](#)

Suggestion: [Create safe, inclusive environments with students](#)

Date

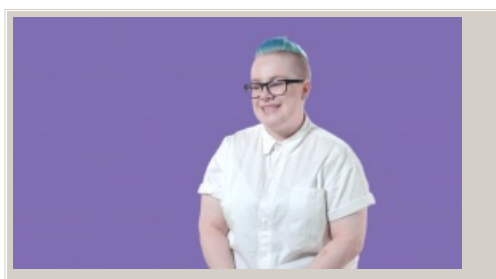
20 April 2024

Link

inclusive.tki.org.nz/guides/supporting-lgbtiqua-students/create-safe-inclusive-environments-with-students

Seek diverse perspectives

Young people discuss their experiences of school and reflect on how to create spaces where we all belong.



Video hosted on Vimeo [http://vimeo.com/138438744](https://vimeo.com/138438744)

Closed Captions

Source:

[Inside Out – RainbowYOUTH \(NZ\)](#)

<http://insideout.ry.org.nz/ep5/>

This information was downloaded/printed from the Ministry of Education's website "Inclusive Education". Except where otherwise noted it is Crown Copyright 2018.

Information on the Inclusive Education website is regularly updated so we recommend you check the website version of this information to ensure it remains current.

