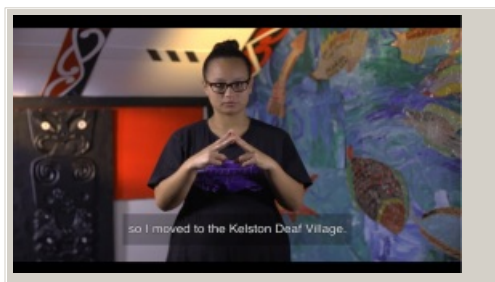


Seek student voice

Māori rangatahi who identify as Deaf help schools to have a better understanding of their access and communication needs, and their aspirations.



Video hosted on Youtube http://youtu.be/_4Zk4WDJkhs

Closed Captions

Source:

[Ministry of Education | Te Tāhuhu o te Mātauranga \(NZ\)](http://youtu.be/_4Zk4WDJkhs)
http://youtu.be/_4Zk4WDJkhs

This information was downloaded/printed from the Ministry of Education's website "Inclusive Education". Except where otherwise noted it is Crown Copyright 2018.

Information on the Inclusive Education website is regularly updated so we recommend you check the website version of this information to ensure it remains current.

