

Build relationships through connection, understanding, and trust

A suggestion for implementing the strategy

'Know your Māori learners' from the Guide:

[Supporting ākonga Māori](#)

Includes:

Connect culture, learning, and supports

Build trust

Find out where students are from

Support Māori achievement

Create authentic contexts

Useful resources

Inclusive Education

From

Guide: [Supporting ākongā Māori](#)

Strategy: [Know your Māori learners](#)

Suggestion: [Build relationships through connection, understanding, and trust](#)

Date

25 March 2025

Link

inclusive.tki.org.nz/guides/supporting-akonga-maori/build-relationships-through-connection-understanding-and-trust

Connect culture, learning, and supports

Strategies to support effective classroom practice.

The most effective classroom practice occurs where kaiako:

- ensure that their teaching is responsive to both the socio-cultural, emotional and cognitive dimensions of ākongā Māori
- understand the importance of creating a learning environment where the background and learning needs of ākongā Māori are interdependent
- seek ways to adjust their teaching to take account of the particular social, emotional and academic needs of ākongā Māori.

Inclusive Education

From

Guide: [Supporting ākongā Māori](#)

Strategy: [Know your Māori learners](#)

Suggestion: [Build relationships through connection, understanding, and trust](#)

Date

25 March 2025

Link

inclusive.tki.org.nz/guides/supporting-akonga-maori/build-relationships-through-connection-understanding-and-trust

Build trust

Kaiako talk about the importance of getting to know ākongā Māori and building trust to enable learning.



Video hosted on Vimeo <http://vimeo.com/113877188>

[View transcript](#)

Source:

[Te Mangōroa \(NZ\)](#)

<http://temangoroa.tki.org.nz/Video-stories/TMK-Building-trust-setting-expectation>

Inclusive Education

From

Guide: [Supporting ākongā Māori](#)

Strategy: [Know your Māori learners](#)

Suggestion: [Build relationships through connection, understanding, and trust](#)

Date

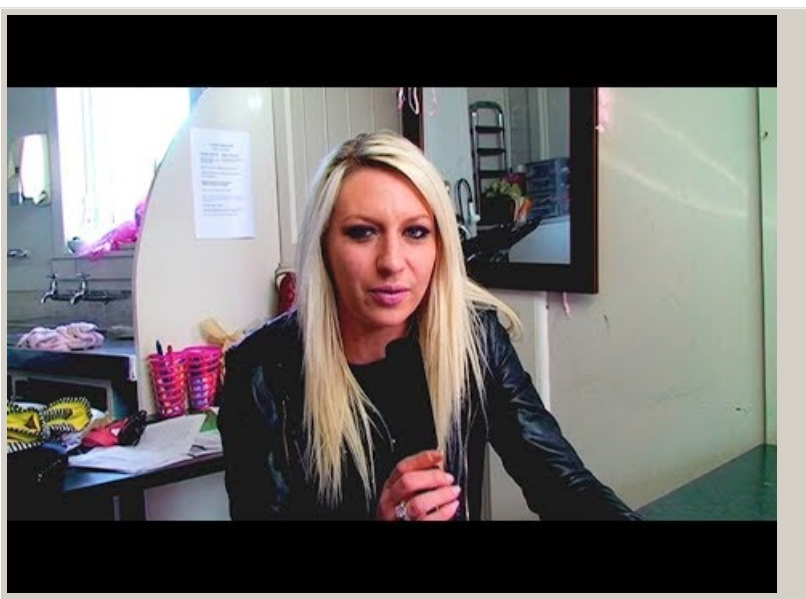
25 March 2025

Link

inclusive.tki.org.nz/guides/supporting-akonga-maori/build-relationships-through-connection-understanding-and-trust

Find out where students are from

Create ongoing opportunities for ākongā Māori to share where they are from, what is important to them, and why.



Video hosted on Youtube <http://youtu.be/ftdFs8mZ2oM>

No captions or transcript

Source:

[Matapuna Training Centre \(NZ\)](#)

<http://youtu.be/ftdFs8mZ2oM>

[Inclusive Education](#)

From

Guide: [Supporting ākonga Māori](#)

Strategy: [Know your Māori learners](#)

Suggestion: [Build relationships through connection, understanding, and trust](#)

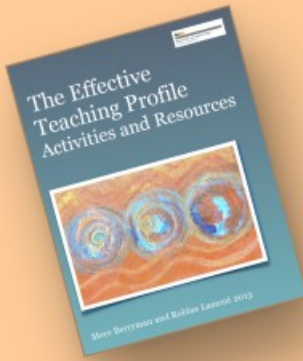
Date

25 March 2025

Link

[inclusive.tki.org.nz/guides/supporting-akonga-maori/build-relationships-through-connection-understanding-and-trust](https://www.inclusive.tki.org.nz/guides/supporting-akonga-maori/build-relationships-through-connection-understanding-and-trust)

Support Māori achievement



The Effective Teaching Profile (ETP) – Te Kotahitanga

Effective teachers create a culturally appropriate and responsive context for learning in classrooms.

In doing so they:

- **reject deficit theorising** as a means of explaining Māori students' achievement levels.
- understand how, and are committed to, bringing about change in **Māori students' educational achievement**.

The Effective Teaching Profile consists of six elements

1. **Manaakitanga** – caring for students as culturally located human beings above all else.
2. **Mana motuhake** – caring for students' performance.
3. **Nga whakapiringatanga** – creating a secure, well-managed learning environment.
4. **Wananga** – engaging in effective teaching interactions with Māori students as Māori.
5. **Ako** – using strategies that promote effective teaching interactions and relationships with students.
6. **Kotahitanga** – promoting, monitoring, and reflecting on outcomes that in turn lead to improvements in educational achievements for Māori students.

Source:

[Te Kotahitanga eBook Collection](#)

<https://www.educationcounts.govt.nz/topics/BES/resources/te-kotahitanga-ebook-collection>

[View full image \(1.6 MB\)](#)

[Inclusive Education](#)

From

Guide: [Supporting ākonga Māori](#)

Strategy: [Know your Māori learners](#)

Suggestion: [Build relationships through connection, understanding, and trust](#)

Date

25 March 2025

Link

inclusive.tki.org.nz/guides/supporting-akonga-maori/build-relationships-through-connection-understanding-and-trust

Create authentic contexts

Create opportunities where ākonga Māori can directly connect their language, culture, and identity to learning.



Video hosted on Vimeo <http://vimeo.com/113877056>

[View transcript](#)

Source:

[Te Mangōroa \(NZ\)](#)

<http://temangoroa.tki.org.nz/Video-stories/TMK-Culture-counts-1>

[Inclusive Education](#)

From

Guide: [Supporting ākonga Māori](#)

Strategy: [Know your Māori learners](#)

Suggestion: [Build relationships through connection, understanding, and trust](#)

Date

25 March 2025

Link

inclusive.tki.org.nz/guides/supporting-akonga-maori/build-relationships-through-connection-understanding-and-trust

Useful resources



The effective teaching profile

The effective teaching profile is made up of two parts. The first identifies two major understandings that effective teachers of ākonga Māori possess, and the second identifies six ways effective teachers relate and interact with ākonga Māori on a daily basis. This resource includes video clips to illustrate key Māori understandings.

[Visit website](#)



Tama-te-rā Ariki: Voices of tamariki and rangatahi Māori

Tamariki and rangatahi Māori share what is important to them. The voices in the report are grouped in five themes.

Publisher: The Office of the Children's Commissioner

[Visit website](#)

This information was downloaded/printed from the Ministry of Education's website "Inclusive Education". Except where otherwise noted it is Crown Copyright 2018.

Information on the Inclusive Education website is regularly updated so we recommend you check the website version of this information to ensure it remains current.