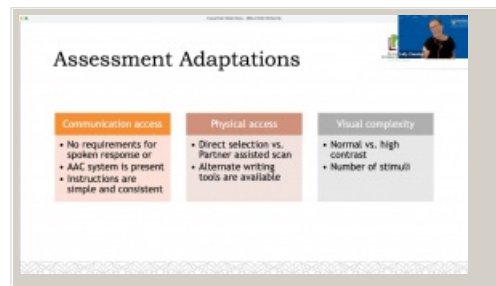


Gather evidence using strengths

Speech-language therapist Sally Clendon talks about ways to gather evidence of learning. For example, a student could show their reading knowledge by selecting a word from four choices rather than reading it aloud.



Video hosted on Vimeo <http://vimeo.com/694097060>

Closed Captions

Source:

[Better Start Literacy Approach – assessment approaches](https://vimeo.com/694097060#t=1235s)
<https://vimeo.com/694097060#t=1235s>

This information was downloaded/printed from the Ministry of Education's website "Inclusive Education". Except where otherwise noted it is Crown Copyright 2018.

Information on the Inclusive Education website is regularly updated so we recommend you check the website version of this information to ensure it remains current.

