

Establish a planning team that includes a wide representation of voices

A suggestion for implementing the strategy¹
Collaborate to develop an inclusive ILE¹ from
the Guide: [ILEs](#)

Includes:

- Build a diverse team
- Seek student and teacher voice
- Establish a reference group
- Consult widely
- Access community knowledge
- Useful resources

Inclusive Education

From

Guide: [Planning innovative learning environments \(ILEs\)](#)

Strategy: [Collaborate to develop an inclusive ILE](#)

Suggestion: [Establish a planning team that includes a wide representation of voices](#)

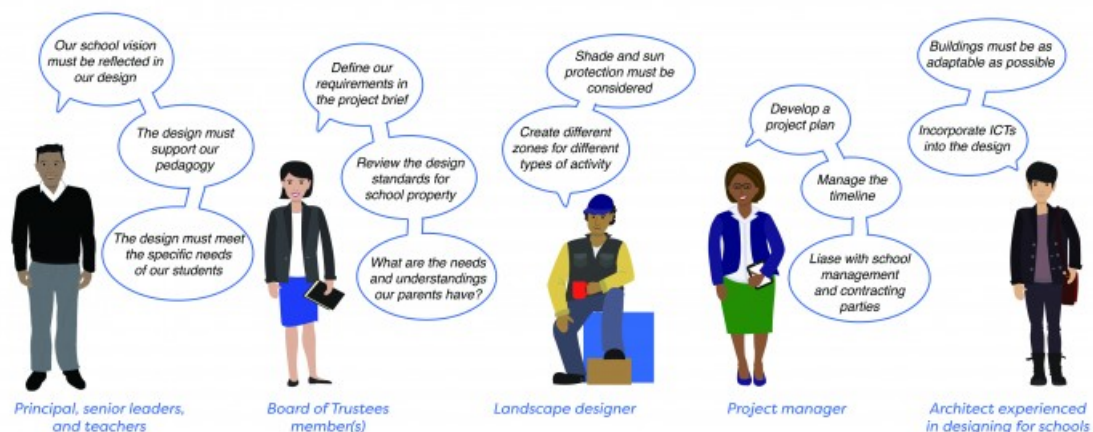
Date

17 June 2026

Link

inclusive.tki.org.nz/guides/planning-innovative-learning-environments-iles/establish-a-planning-team-that-includes-a-wide-representation-of-voices

Build a diverse team



Source:

Ministry of Education | Te Tāhuhu o te Mātauranga

[View full image \(2 MB\)](#)

Inclusive Education

From

Guide: [Planning innovative learning environments \(ILEs\)](#)

Strategy: [Collaborate to develop an inclusive ILE](#)

Suggestion: [Establish a planning team that includes a wide representation of voices](#)

Date

17 June 2026

Link

inclusive.tki.org.nz/guides/planning-innovative-learning-environments-iles/establish-a-planning-team-that-includes-a-wide-representation-of-voices

Seek student and teacher voice

Voices of students and teachers need to be taken into account to ensure designs meet expectations and requirements.

Participation in all design phases can lessen the transitional impact as concepts, methodologies, and features are progressively exposed in context.

The local context: Educational vision and teaching and learning approaches

Source:

The local context: Educational vision and teaching and learning approaches

Inclusive Education

From

Guide: [Planning innovative learning environments \(ILEs\)](#)

Strategy: [Collaborate to develop an inclusive ILE](#)

Suggestion: [Establish a planning team that includes a wide representation of voices](#)

Date

17 June 2026

Link

inclusive.tki.org.nz/guides/planning-innovative-learning-environments-iles/establish-a-planning-team-that-includes-a-wide-representation-of-voices

Establish a reference group

Possible reference group members.

- ✓ [RTL](#)
- ✓ [Dyslexia Foundation of New Zealand](#)
- ✓ [BLENNZ](#)
- ✓ [IHC in your community](#)
- ✓ [Autism NZ](#)
- ✓ [Speech-language therapists](#)
- ✓ [Hearing New Zealand](#)
- ✓ [Ko Taku Reo | Deaf Education New Zealand](#)
- ✓ [Deaf Children New Zealand](#)
- ✓ [Hear for Families APD New Zealand](#)
- ✓ [Dyspraxia Support Group of New Zealand](#)
- ✓ [New Zealand Down Syndrome Association](#)
- ✓ [CCS Disability Action](#)
- ✓ [Halberg Foundation](#)
- ✓ [Ministry of Education support for children who are deaf and hard of hearing](#)
- ✓ [Barrier Free | CCS Disability Action](#)

Inclusive Education

From

Guide: [Planning innovative learning environments \(ILEs\)](#)

Strategy: [Collaborate to develop an inclusive ILE](#)

Suggestion: [Establish a planning team that includes a wide representation of voices](#)

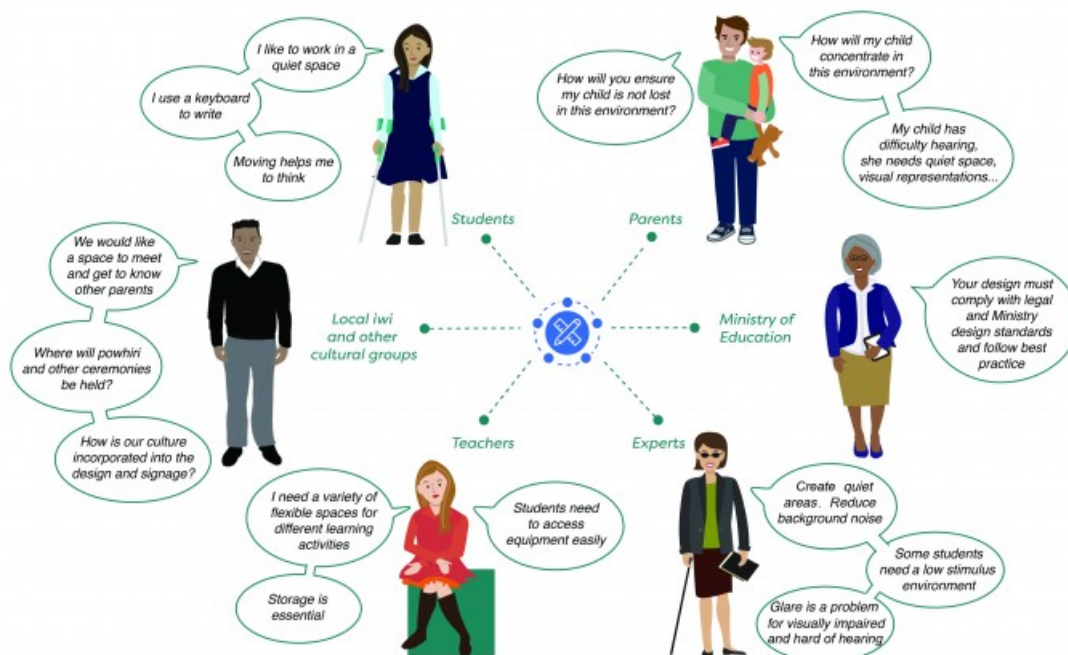
Date

17 June 2026

Link

inclusive.tki.org.nz/guides/planning-innovative-learning-environments-iles/establish-a-planning-team-that-includes-a-wide-representation-of-voices

Consult widely



Source:

Ministry of Education | Te Tāhuhu o te Mātauranga

[View full image \(2.3 MB\)](#)

Inclusive Education

From

Guide: [Planning innovative learning environments \(ILEs\)](#)

Strategy: [Collaborate to develop an inclusive ILE](#)

Suggestion: [Establish a planning team that includes a wide representation of voices](#)

Date

17 June 2026

Link

inclusive.tki.org.nz/guides/planning-innovative-learning-environments-iles/establish-a-planning-team-that-includes-a-wide-representation-of-voices

Access community knowledge

Students, their parents, and whānau are:

- inherently capable
- agents of their own cultures
- articulate in sharing with teachers and leaders their knowledge about the way their children learn and what they may need to change.

Inclusive Education

From

Guide: [Planning innovative learning environments \(ILEs\)](#)

Strategy: [Collaborate to develop an inclusive ILE](#)

Suggestion: [Establish a planning team that includes a wide representation of voices](#)

Date

17 June 2026

Link

inclusive.tki.org.nz/guides/planning-innovative-learning-environments-iles/establish-a-planning-team-that-includes-a-wide-representation-of-voices

Useful resources



Cashmere Primary – Working together to create a master plan

Working together to create a master plan

Publisher: Grow Waitaha

[Visit website](#)

This information was downloaded/printed from the Ministry of Education's website "Inclusive Education". Except where otherwise noted it is Crown Copyright 2018.

Information on the Inclusive Education website is regularly updated so we recommend you check the website version of this information to ensure it remains current.