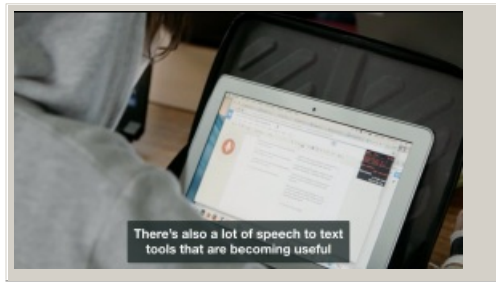


Reduce barriers to learning

Digital technology supports are available for **all students to use as needed** at Wellington High School.



Video hosted on Vimeo <http://vimeo.com/160672115>

Closed Captions

Source:

[Enabling e-Learning \(NZ\)](http://elearning.tki.org.nz/Enabling-e-Learning-(NZ))

<http://elearning.tki.org.nz/Teaching/Inclusive-classrooms/BYOD-supporting-inclusion>

This information was downloaded/printed from the Ministry of Education's website "Inclusive Education". Except where otherwise noted it is Crown Copyright 2018.

Information on the Inclusive Education website is regularly updated so we recommend you check the website version of this information to ensure it remains current.

