

Value the diversity every student brings to the school

A suggestion for implementing the strategy 'Model a commitment to inclusion' from the Guide: [Parents, whānau, and communities](#)

Includes:

- Build effective relationships
- A principal's view of inclusion
- Share stories about ALL students
- Benefits of diversity
- Useful resources

Inclusive Education

From

Guide: [Partnering with parents, whānau, and communities](#)

Strategy: [Model a commitment to inclusion](#)

Suggestion: [Value the diversity every student brings to the school](#)

Date

13 June 2026

Link

inclusive.tki.org.nz/guides/partnering-with-parents-whanau-and-communities/welcome-and-value-the-diversity-every-student-brings-to-the-school

Build effective relationships

Engagement works well when relationships between parents and the people at the school are developed and nurtured in ways that respect diversity.

Source:

[Partners in learning: Parents' voices \(ERO, 2008\)](#)

<https://ero.govt.nz/our-research/partners-in-learning-parents-voices>

Inclusive Education

From

Guide: [Partnering with parents, whānau, and communities](#)

Strategy: [Model a commitment to inclusion](#)

Suggestion: [Value the diversity every student brings to the school](#)

Date

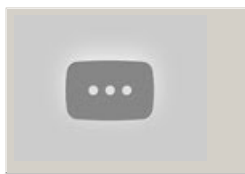
13 June 2026

Link

inclusive.tki.org.nz/guides/partnering-with-parents-whanau-and-communities/welcome-and-value-the-diversity-every-student-brings-to-the-school

A principal's view of inclusion

David Macleod describes how they include and support all students at Mahurangi College.



Video hosted on Youtube <http://youtu.be/M7uBDwWv1eA>

Closed Captions

Source:

[Ministry of Education | Te Tāhuhu o te Mātauranga \(NZ\)](#)
<https://www.youtube.com/watch?v=M7uBDwWv1eA>

Inclusive Education

From

Guide: [Partnering with parents, whānau, and communities](#)

Strategy: [Model a commitment to inclusion](#)

Suggestion: [Value the diversity every student brings to the school](#)

Date

13 June 2026

Link

inclusive.tki.org.nz/guides/partnering-with-parents-whanau-and-communities/welcome-and-value-the-diversity-every-student-brings-to-the-school

Share stories about ALL students

Consider how your school can share its journey towards becoming a more inclusive learning community.

Consider how to share:

- illustrated success stories about ALL students
- student, parent, family, and teacher perspectives on diversity
- the school's vision and the steps you are taking towards becoming a more inclusive community
- teacher stories about their own evolving inclusive practice
- stories in all the languages of the school community
- digital text, print, and video versions of stories, providing parents and whānau a range of access options that work best for them.

Inclusive Education

From

Guide: [Partnering with parents, whānau, and communities](#)

Strategy: [Model a commitment to inclusion](#)

Suggestion: [Value the diversity every student brings to the school](#)

Date

13 June 2026

Link

inclusive.tki.org.nz/guides/partnering-with-parents-whanau-and-communities/welcome-and-value-the-diversity-every-student-brings-to-the-school

Benefits of diversity

Mark Spooner



Video hosted on Youtube <http://youtu.be/7ZGgnt14OPE>

No captions or transcript

Source:

[inclusiveed \(Canada\)](#)

<https://youtu.be/7ZGgnt14OPE?list=PL7365F7B3EE14143>

Inclusive Education

From

Guide: [Partnering with parents, whānau, and communities](#)

Strategy: [Model a commitment to inclusion](#)

Suggestion: [Value the diversity every student brings to the school](#)

Date

13 June 2026

Link

inclusive.tki.org.nz/guides/partnering-with-parents-whanau-and-communities/welcome-and-value-the-diversity-every-student-brings-to-the-school

Useful resources



Index for Inclusion Network: Indicators

This is a set of materials to support the self-review of all aspects of a school setting. Indicators start from page 39.

Publisher: Centre for Studies on Inclusive Education

[Download PDF](#)



Inclusive education: Resources

Videos and resources from Alberta Education relating to inclusive education.

Publisher: Government of Alberta

[Visit website](#)

This information was downloaded/printed from the Ministry of Education's website "Inclusive Education". Except where otherwise noted it is Crown Copyright 2018.

Information on the Inclusive Education website is regularly updated so we recommend you check the website version of this information to ensure it remains current.