

Inclusive Education

From

Guide: [Partnering with parents, whānau, and communities](#)

Strategy: [Partner with whānau](#)

Suggestion: [Value the family's knowledge of effective ways to support their child's learning and well-being](#)

Date

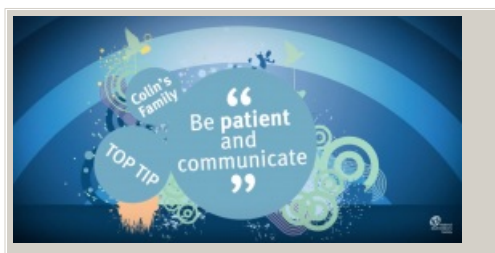
13 October 2021

Link

inclusive.tki.org.nz/guides/partnering-with-parents-whanau-and-communities/value-the-family-knowledge-of-effective-ways-to-support-their-childrens-learning-and-well-being

Build on strategies from home

A family shares its strategies for communicating and interacting with their Deaf son.



Video hosted on Youtube <http://youtu.be/F2PLvuSJYUo>

Closed Captions

Source:

National Deaf Children's Society (UK)
<https://www.youtube.com/watch?v=F2PLvuSJYUo>&feature=youtu.be

This information was downloaded/printed from the Ministry of Education's website "Inclusive Education". Except where otherwise noted it is Crown Copyright 2018.

Information on the Inclusive Education website is regularly updated so we recommend you check the website version of this information to ensure it remains current.

