

# Provide staff with professional development to support their discussions about inclusion

A suggestion for implementing the strategy 'Model a commitment to inclusion' from the Guide: [Parents, whānau, and communities](#)

---

## **Includes:**

- Address concerns
- Consider parent perspectives
- Support school-wide inclusive practices
- Talk about the benefits of diversity
- Useful resources

[Inclusive Education](#)

From

Guide: [Partnering with parents, whānau, and communities](#)

Strategy: [Model a commitment to inclusion](#)

Suggestion: [Provide staff with professional development to support their discussions about inclusion](#)

Date

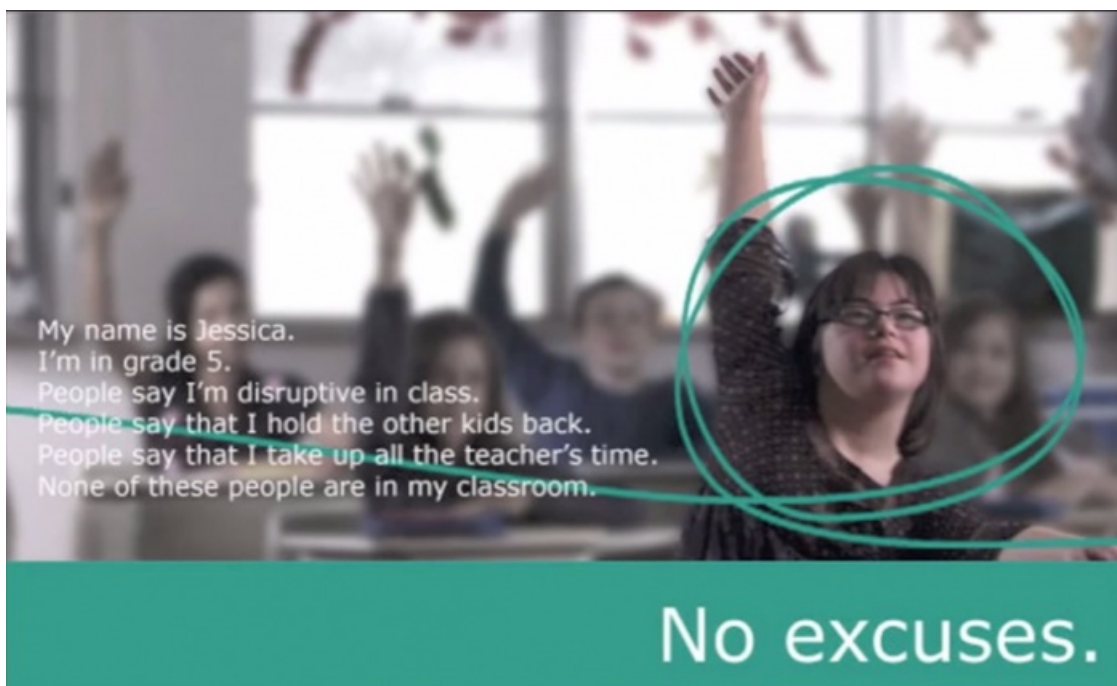
04 June 2026

Link

[inclusive.tki.org.nz/guides/partnering-with-parents-whanau-and-communities/provide-staff-with-professional-development-to-support-their-discussions-about-inclusion](https://inclusive.tki.org.nz/guides/partnering-with-parents-whanau-and-communities/provide-staff-with-professional-development-to-support-their-discussions-about-inclusion)

---

## Address concerns



Source:

[Canadian Association for Community Living](#)

<https://www.youtube.com/watch?v=ow8eddjOwI>

[View full image \(862 KB\)](#)

## Inclusive Education

From

Guide: [Partnering with parents, whānau, and communities](#)

Strategy: [Model a commitment to inclusion](#)

Suggestion: [Provide staff with professional development to support their discussions about inclusion](#)

Date

04 June 2026

Link

[inclusive.tki.org.nz/guides/partnering-with-parents-whanau-and-communities/provide-staff-with-professional-development-to-support-their-discussions-about-inclusion](https://inclusive.tki.org.nz/guides/partnering-with-parents-whanau-and-communities/provide-staff-with-professional-development-to-support-their-discussions-about-inclusion)

---

## Consider parent perspectives

Parents of children needing additional support found that some schools were not open to working with them, and they felt that they were unwelcome.

They struggled with entrenched attitudes of some school staff to their child and his or her learning or behavioural needs.

For some parents, labelling their child and themselves, sometimes linked to previous family history with the school, undermined the development of constructive relationships.

## Inclusive Education

From

Guide: [Partnering with parents, whānau, and communities](#)

Strategy: [Model a commitment to inclusion](#)

Suggestion: [Provide staff with professional development to support their discussions about inclusion](#)

Date

04 June 2026

Link

[inclusive.tki.org.nz/guides/partnering-with-parents-whanau-and-communities/provide-staff-with-professional-development-to-support-their-discussions-about-inclusion](https://inclusive.tki.org.nz/guides/partnering-with-parents-whanau-and-communities/provide-staff-with-professional-development-to-support-their-discussions-about-inclusion)

---

## Support school-wide inclusive practices

Invest in building teachers' skills, expertise, and confidence.

- Take time to listen to teachers' needs and concerns.
- Support reflective processes such as teaching as inquiry and support teacher learning about inclusive practices
- Link teachers to experienced professionals beyond the school to develop knowledge and understanding.
- Support parent/teacher connections – they are the experts about their child.
- Connect teachers with other teachers who have experience in inclusive practices and talking about inclusion.
- Cluster with other schools for training and development.
- Support collective responsibility for students in your school.
- Support your teachers openly sharing classroom practices, learning from each other, and problem-solving together.

## Inclusive Education

From

Guide: [Partnering with parents, whānau, and communities](#)

Strategy: [Model a commitment to inclusion](#)

Suggestion: [Provide staff with professional development to support their discussions about inclusion](#)

Date

04 June 2026

Link

[inclusive.tki.org.nz/guides/partnering-with-parents-whanau-and-communities/provide-staff-with-professional-development-to-support-their-discussions-about-inclusion](https://inclusive.tki.org.nz/guides/partnering-with-parents-whanau-and-communities/provide-staff-with-professional-development-to-support-their-discussions-about-inclusion)

---

## Talk about the benefits of diversity

Mark Spooner shares that being exposed to difference develops empathy for others.



Video hosted on Youtube <http://youtu.be/7ZGgntl4OPE>

No captions or transcript

**Source:**

[inclusiveed \(Canada\)](#)

[https://www.youtube.com/watch?](https://www.youtube.com/watch?v=7ZGgntl4OPE&list=PL7365F7B3EE141439&index=43)

[v=7ZGgntl4OPE&list=PL7365F7B3EE141439&index=43](https://www.youtube.com/watch?v=7ZGgntl4OPE&list=PL7365F7B3EE141439&index=43)

## Inclusive Education

From

Guide: [Partnering with parents, whānau, and communities](#)

Strategy: [Model a commitment to inclusion](#)

Suggestion: [Provide staff with professional development to support their discussions about inclusion](#)

Date

04 June 2026

Link

[inclusive.tki.org.nz/guides/partnering-with-parents-whanau-and-communities/provide-staff-with-professional-development-to-support-their-discussions-about-inclusion](https://inclusive.tki.org.nz/guides/partnering-with-parents-whanau-and-communities/provide-staff-with-professional-development-to-support-their-discussions-about-inclusion)

---

## Useful resources



### Educationally powerful partnerships

This resource supports principals and other school leaders to improve outcomes for all ākonga by working in educationally powerful partnerships with parents, whānau, mana whenua, their community, and other key stakeholders.

Publisher: Ministry of Education NZ

[Visit website](#)

This information was downloaded/printed from the Ministry of Education's website "Inclusive Education". Except where otherwise noted it is Crown Copyright 2018.

Information on the Inclusive Education website is regularly updated so we recommend you check the website version of this information to ensure it remains current.