

Inclusive Education

From

Guide: [Fetal alcohol spectrum disorder and learning](#)

Strategy: [Helpful classroom strategies years 1-8](#)

Suggestion: [Support understanding](#)

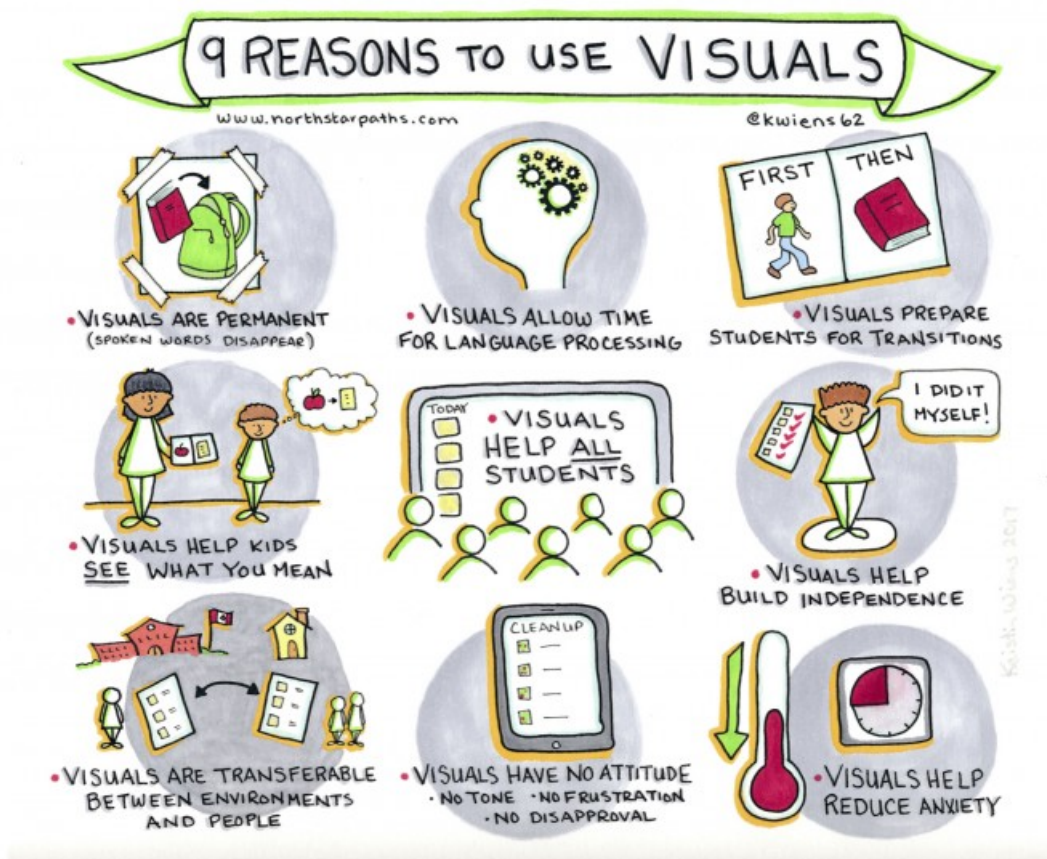
Date

25 March 2025

Link

inclusive.tki.org.nz/guides/fetal-alcohol-spectrum-disorder-and-learning/y1-8-support-understanding

Maximise use of visuals



Source:

[North Star Paths](#)

<https://northstarpaths.com/>

[View full image \(1.5 MB\)](#)

This information was downloaded/printed from the Ministry of Education's website "Inclusive Education". Except where otherwise noted it is Crown Copyright 2018.

Information on the Inclusive Education website is regularly updated so we recommend you check the website version of this information to ensure it remains current.

