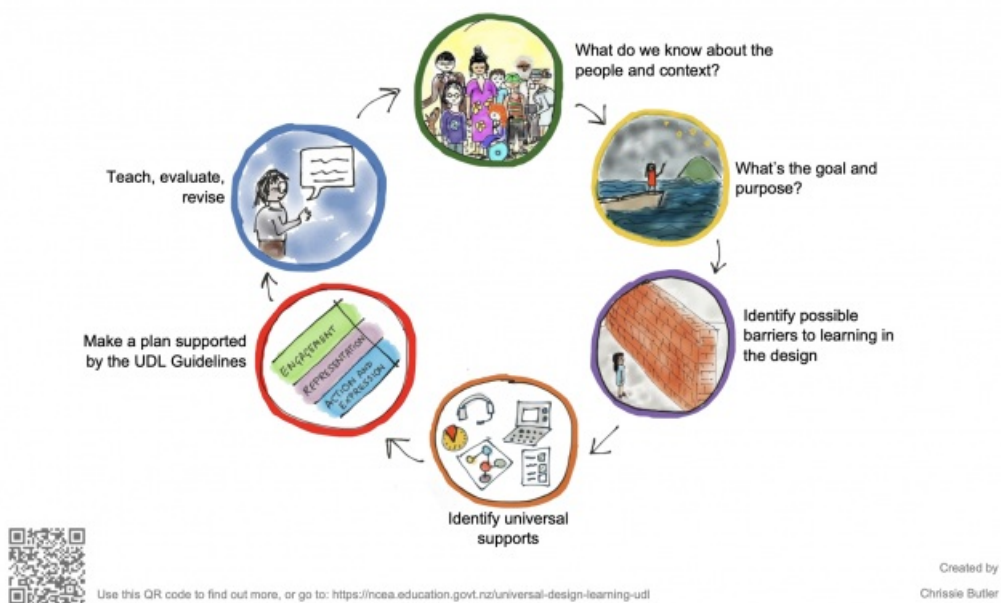


Adopt a people-first design process

Universal Design for Learning (UDL) thinking cycle



Source:

Ministry of Education | Te Tāhuhu o te Mātauranga

<https://ncea.education.govt.nz/universal-design-learning-udl>

[View full image \(1019 KB\)](#)

This information was downloaded/printed from the Ministry of Education's website "Inclusive Education". Except where otherwise noted it is Crown Copyright 2018.

Information on the Inclusive Education website is regularly updated so we recommend you check the website version of this information to ensure it remains current.

