

Support participation and confidence

A suggestion for implementing the strategy
'Helpful classroom strategies in years 1-8'
from the Guide: [Dyslexia and learning](#)

-
- Includes:**
- Create a dyslexia-friendly classroom
 - Foster trust and confidence
 - Fonts for easy reading
 - Provide time
 - Reduce quantity of work
 - Useful resources

Inclusive Education

From

Guide: [Dyslexia and learning](#)

Strategy: [Helpful classroom strategies in years 1-8](#)

Suggestion: [Support participation and confidence](#)

Date

25 February 2024

Link

inclusive.tki.org.nz/guides/dyslexia-and-learning/support-participation-and-confidence

Create a dyslexia-friendly classroom

Dyslexia Foundation of New Zealand
Navigation • Understanding • Action

Is My Classroom Dyslexia Aware?

Date: _____
Completed by: _____

Student Accommodations

- Homework**
 - No homework as an option
 - Stress free and meaningful
 - Personalised or differentiated
 - Related to prior knowledge
 - Tidy the classroom
 - Offer alternatives to writing
 - Routine (set days) timetable
 - Clear instructions
 - Time driven NOT task driven
- Recording work**
 - Paste information into book
 - Make photocopies available
 - Audio, video or photographs
 - Minimise copying from board
 - Encourage mindmaps, flowcharts etc
 - Non traditional assessment
- Resources**
 - Colour coded
 - Visual timetables
 - Well labeled
 - Familiar and consistent layout
 - Easily Accessible
 - Bring your own device (BYOD)
 - ICT available
- Presentation**
 - Print on pastel shades
 - Use bold to highlight
 - Create lots of space
 - Plain font of suitable size
 - Bullet point key info
 - Thin notes
- Collaborative Work**
 - Peer marking
 - Peer tutoring
 - Inquiry learning
 - Flexible grouping
 - Paired reading
 - Scribed work
- Environment**
 - Ability to refer yourself to a comfort room
 - Lighting
 - Seating
 - Hygiene and cleanliness
 - Flexibility around set up
 - Structure and order
 - Bringing Nature inside
 - Aesthetically pleasing
- Time**
 - Short achievable tasks
 - Less is more
 - Brain breaks
 - Remove time as a barrier
 - Time to revisit
 - Flexible deadlines
- Communication**
 - Calm and positive ethos
 - Have a 'gr' culture
 - Free to make mistakes
 - Stress free comfortable learning
 - Flexible groupings
 - Good transition process
 - Group by thinking not just by basic skills
 - Consistent approaches to behavior management
 - Everybody counts
 - Let the students teach
- Learning Preferences**
 - Foster success through learning preferences
 - Alternative ways of recording
 - Opportunities to present alternative evidence of learning
 - Adapt tasks to suit
 - Use multi-sensory techniques
 - Provide challenge but with accommodations
 - Embed differentiation in the classroom
 - Ability appropriate task
- Stress Free**
 - Time to think
 - Give control and responsibility
 - Encourage student voice
 - Free to make mistakes
 - The right to pass - e.g. don't read aloud
 - Encourage self advocacy
 - Remove time as a barrier
 - Mark content not spelling

Our Classroom score is/84

For more information visit www.dffz.org.nz | www.ad.org.nz

Source:

[Dyslexia Foundation NZ](http://www.dyslexiafoundation.org.nz)

http://www.dyslexiafoundation.org.nz/dyslexiaadvocacy/pdf/Mind%20Map%202014_lowres.pdf

[View full image \(1.6 MB\)](#)

Inclusive Education

From

Guide: [Dyslexia and learning](#)

Strategy: [Helpful classroom strategies in years 1-8](#)

Suggestion: [Support participation and confidence](#)

Date

25 February 2024

Link

inclusive.tki.org.nz/guides/dyslexia-and-learning/support-participation-and-confidence

Foster trust and confidence

Build practical supports into the culture of your classroom.

- ✓ Use the students' cultures, interests, and strengths to create opportunities for them to take the lead.
- ✓ Foster tuakana-teina relationships and create a class culture where students support each other.
- ✓ Give ongoing prompts and positive feedback. Provide the student with strategies to help them when they get stuck.
- ✓ Recognise and eliminate situations that students may find difficult or embarrassing, such as reading aloud to the class.
- ✓ Recognise avoidance strategies and provide practical support and encouragement.
- ✓ Act quickly on any concerns about a student's wellbeing.
- ✓ Give feedback on students' success to their parents and whānau.

[Inclusive Education](#)

From

Guide: [Dyslexia and learning](#)

Strategy: [Helpful classroom strategies in years 1-8](#)

Suggestion: [Support participation and confidence](#)

Date

25 February 2024

Link

inclusive.tki.org.nz/guides/dyslexia-and-learning/support-participation-and-confidence

Fonts for easy reading

Children learning to read benefit from larger text sizes.

When creating resources and worksheets, keep plenty of blank space on the page.

Easy-to-read fonts are sans serif, mono-spaced, and roman font types, including:

- Helvetica
- Courier
- Arial
- Verdana
- Computer Modern.

Italic fonts are more difficult to read.

[Inclusive Education](#)

From

Guide: [Dyslexia and learning](#)

Strategy: [Helpful classroom strategies in years 1-8](#)

Suggestion: [Support participation and confidence](#)

Date

25 February 2024

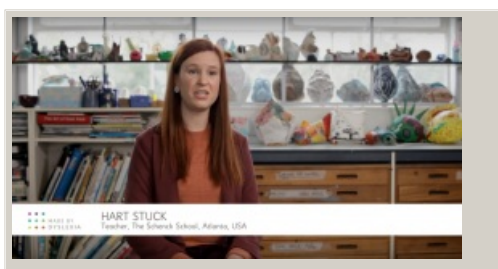
Link

inclusive.tki.org.nz/guides/dyslexia-and-learning/support-participation-and-confidence

Provide time

Allowing additional time to complete school work and take tests can have a huge impact on a dyslexic student's ability to succeed.

Teachers share tips to support success.



Video hosted on Youtube <http://youtu.be/NdrBpOV67DY>

Closed Captions

Source:

[Made By Dyslexia \(UK\)](#)

https://www.youtube.com/channel/UCLBUsgxhf_otK_qKoZnPopA/featured

Inclusive Education

From

Guide: [Dyslexia and learning](#)

Strategy: [Helpful classroom strategies in years 1-8](#)

Suggestion: [Support participation and confidence](#)

Date

25 February 2024

Link

inclusive.tki.org.nz/guides/dyslexia-and-learning/support-participation-and-confidence

Reduce quantity of work



Source:

Ministry of Education | Te Tāhuhu o te Mātauranga

[View full image \(593 KB\)](#)

[Inclusive Education](#)

From

Guide: [Dyslexia and learning](#)

Strategy: [Helpful classroom strategies in years 1-8](#)

Suggestion: [Support participation and confidence](#)

Date

25 February 2024

Link

inclusive.tki.org.nz/guides/dyslexia-and-learning/support-participation-and-confidence

Useful resources



Technology tools for learning

Strategies and approaches for using technologies to provide inclusive and personalised learning pathways.

Publisher: Ministry of Education | Te Tāhuhu o te Mātauranga

[Visit website](#)



Dyslexia in the classroom: What every teacher needs to know

Read time: 28 min

A toolkit to provide classroom teachers with information about dyslexia, classroom strategies, tips and tools.

Publisher: International Dyslexia Association

[Download PDF](#)



Carla McNeil | Highlights from the Working Memory Conference 2016

Carla shares some insights about working memory and considerations when developing IEPs.

Publisher: TEST

[Visit website](#)

This information was downloaded/printed from the Ministry of Education's website "Inclusive Education". Except where otherwise noted it is Crown Copyright 2018.

Information on the Inclusive Education website is regularly updated so we recommend you check the website version of this information to ensure it remains current.