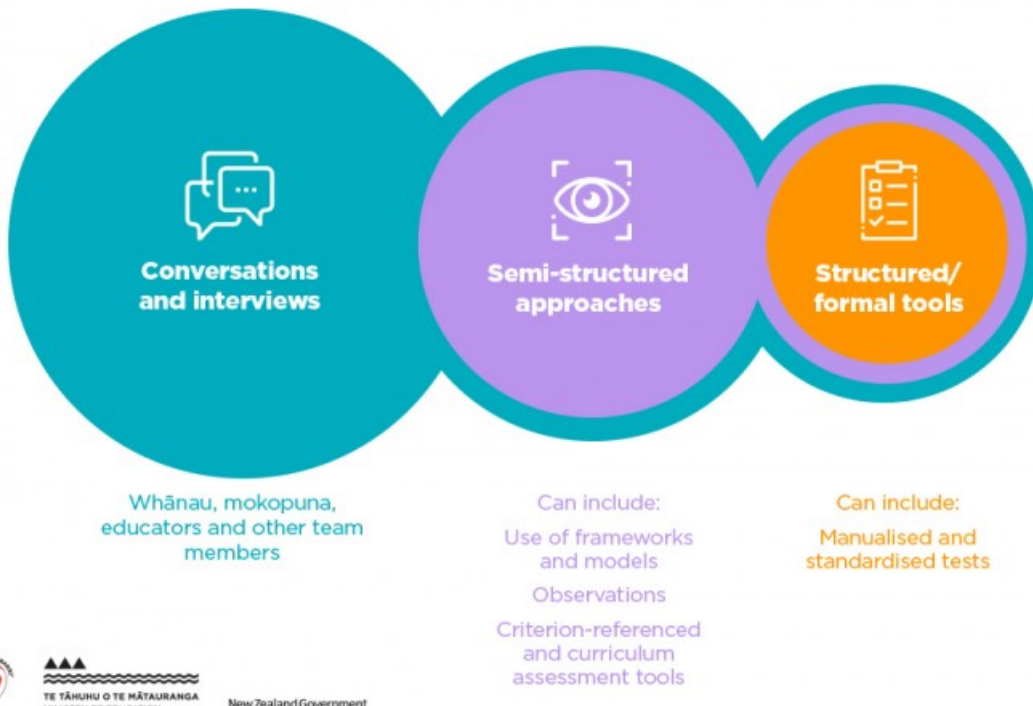


Identify ways to gather information

Kohikohi – Gathering information to deepen understanding

Least intrusive, most inclusive



New Zealand Government

Source:
Ministry of Education | Te Tāhuhu o te Mātauranga

[View full image \(259 KB\)](#)

This information was downloaded/printed from the Ministry of Education's website "Inclusive Education". Except where otherwise noted it is Crown Copyright 2018.

Information on the Inclusive Education website is regularly updated so we recommend you check the website version of this information to ensure it remains current.

