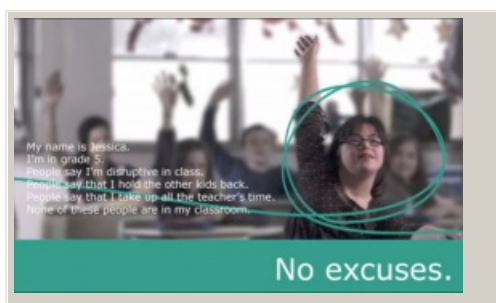


# Consider social attitudes towards students

Use these videos to reflect on attitudes and beliefs towards inclusive practices.



Video hosted on Youtube [http://youtu.be/G68R\\_nCuJTs](http://youtu.be/G68R_nCuJTs)

No captions or transcript

**Source:**

[Canadian Association of Community Living \(Canada\)](https://youtu.be/G68R_nCuJTs)  
[https://youtu.be/G68R\\_nCuJTs](https://youtu.be/G68R_nCuJTs)

This information was downloaded/printed from the Ministry of Education's website "Inclusive Education". Except where otherwise noted it is Crown Copyright 2018.

Information on the Inclusive Education website is regularly updated so we recommend you check the website version of this information to ensure it remains current.

