

Inclusive Education

From

Guide: [Deaf or hard of hearing students and learning](#)

Strategy: [Identify needs and how to provide support](#)

Suggestion: [Partner with whānau, parents and caregivers](#)

Date

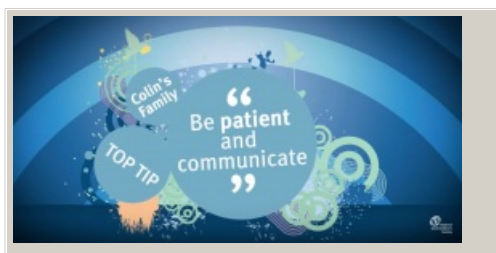
14 September 2025

Link

inclusive.tki.org.nz/guides/deaf-or-hard-of-hearing-students-and-learning/partner-with-whanau-parents-and-caregivers

Act on whānau expertise

A family share their strategies for communicating and interacting with their Deaf son.



Video hosted on Youtube <http://youtu.be/F2PLvuSJYUo>

Closed Captions

Source:

[National Deaf Children's Society \(UK\)](#)
<http://youtu.be/F2PLvuSJYUo>

This information was downloaded/printed from the Ministry of Education's website "Inclusive Education". Except where otherwise noted it is Crown Copyright 2018.

Information on the Inclusive Education website is regularly updated so we recommend you check the website version of this information to ensure it remains current.

