

Partner with whānau, parents and caregivers

A suggestion for implementing the strategy
'Identify needs and how to provide support'
from the Guide: [Deaf and hard of hearing](#)

Includes:

- Act on whānau expertise
- Support home-school continuity
- Establish collaborative partnerships
- What to ask
- NCEA explained in NZSL
- Useful information for parents

Inclusive Education

From

Guide: [Deaf or hard of hearing students and learning](#)

Strategy: [Identify needs and how to provide support](#)

Suggestion: [Partner with whānau, parents and caregivers](#)

Date

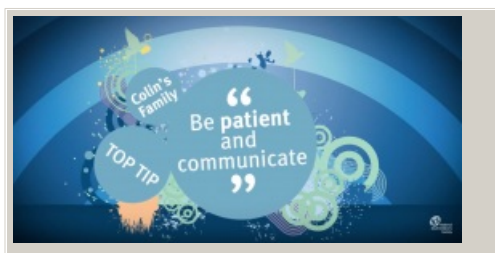
04 June 2026

Link

inclusive.tki.org.nz/guides/deaf-or-hard-of-hearing-students-and-learning/partner-with-whanau-parents-and-caregivers

Act on whānau expertise

A family share their strategies for communicating and interacting with their Deaf son.



Video hosted on Youtube <http://youtu.be/F2PLvuSJYUo>

Closed Captions

Source:

National Deaf Children's Society (UK)
<http://youtu.be/F2PLvuSJYUo>

Inclusive Education

From

Guide: [Deaf or hard of hearing students and learning](#)

Strategy: [Identify needs and how to provide support](#)

Suggestion: [Partner with whānau, parents and caregivers](#)

Date

04 June 2026

Link

inclusive.tki.org.nz/guides/deaf-or-hard-of-hearing-students-and-learning/partner-with-whanau-parents-and-caregivers

Support home-school continuity

Invite families to share approaches that are successful at home to build continuity and strengthen engagement and learning approaches.

- ✓ Communicate and share information in a meaningful way, demonstrating understanding and support for parents' concerns.
- ✓ Value what parents and caregivers have noticed or assessments they have had done outside school.
- ✓ Involve parents and caregivers in determining strategies to support student learning and well-being.
- ✓ Work with any programmes or materials they are using at home, to maximise consistency and support for the student.
- ✓ Develop systems for passing on information about a student's needs, progress and next steps in ways that are meaningful.
- ✓ Share information about out-of-school programmes (for example, classes or groups for music, art, debating or sport).
- ✓ Actively and regularly communicate positive information and achievements to the family.

Inclusive Education

From

Guide: [Deaf or hard of hearing students and learning](#)

Strategy: [Identify needs and how to provide support](#)

Suggestion: [Partner with whānau, parents and caregivers](#)

Date

04 June 2026

Link

inclusive.tki.org.nz/guides/deaf-or-hard-of-hearing-students-and-learning/partner-with-whanau-parents-and-caregivers

Establish collaborative partnerships

A successful partnership involves the teacher, the family, the student, and support staff such as resource teacher of the deaf.



Video hosted on Youtube <http://youtu.be/1FIWCyVqpWo>

[View transcript](#)

Source:

LEARN NC (US)

<https://www.youtube.com/watch?v=1FIWCyVqpWo&feature=youtu.be>

Inclusive Education

From

Guide: [Deaf or hard of hearing students and learning](#)

Strategy: [Identify needs and how to provide support](#)

Suggestion: [Partner with whānau, parents and caregivers](#)

Date

04 June 2026

Link

inclusive.tki.org.nz/guides/deaf-or-hard-of-hearing-students-and-learning/partner-with-whanau-parents-and-caregivers

What to ask

Connect with parents, whānau, and caregivers to understand the strengths and needs of ākongā.

The people in the learners' lives:

- parent and whānau hopes and priorities
- important people in the learner's life
- best methods and times to communicate with the family
- professionals working with the family
- questions they have and support they would like from the school.

Practical elements:

- the language(s) spoken at home
- medications and allergies
- equipment used at home
- what they do at home to support learning

Learners' likes and dislikes:

- likes, interests, strengths, what they're good at, can do independently
- dislikes, what can upset them, how they express this, calming skills
- favourites (TV programmes, hobbies, books, songs, sports)

Inclusive Education

From

Guide: [Deaf or hard of hearing students and learning](#)

Strategy: [Identify needs and how to provide support](#)

Suggestion: [Partner with whānau, parents and caregivers](#)

Date

04 June 2026

Link

inclusive.tki.org.nz/guides/deaf-or-hard-of-hearing-students-and-learning/partner-with-whanau-parents-and-caregivers

NCEA explained in NZSL

Share this is a brief animated overview of The National Certificate of Educational Achievement (NCEA) with parents who communicate using New Zealand Sign Language.



Video hosted on Youtube <http://youtu.be/XoVxNJLDsX8>

No captions or transcript

Source:

[NZQA \(NZ\)](#)

<https://www.youtube.com/watch?v=XoVxNJLDsX8>

https://www.youtube.com/watch?v=XoVxNJLDsX8&ab_channel=ShawleyCommunityPrimarySchool

[Inclusive Education](#)

From

Guide: [Deaf or hard of hearing students and learning](#)

Strategy: [Identify needs and how to provide support](#)

Suggestion: [Partner with whānau, parents and caregivers](#)

Date

04 June 2026

Link

inclusive.tki.org.nz/guides/deaf-or-hard-of-hearing-students-and-learning/partner-with-whanau-parents-and-caregivers

Useful information for parents



The family book: Te pukapuka o nga whānau

Read time: 125 min

An introduction to services and supports for families and whānau of children who are hard of hearing.

[Download PDF](#)



New Zealand Federation for Deaf Children Inc.

This website includes videos, access to specialist support and practical tips and strategies for families.

Publisher: Deaf Children New Zealand Tamariki Turi o Aotearoa

[Visit website](#)

This information was downloaded/printed from the Ministry of Education's website "Inclusive Education". Except where otherwise noted it is Crown Copyright 2018.

Information on the Inclusive Education website is regularly updated so we recommend you check the website version of this information to ensure it remains current.