

Inclusive Education

From

Guide: [Deaf or hard of hearing students and learning](#)

Strategy: [Identify needs and how to provide support](#)

Suggestion: [Ask the learner what will help and consider a learner profile](#)

Date

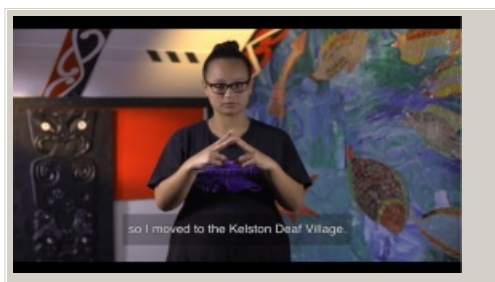
10 August 2025

Link

inclusive.tki.org.nz/guides/deaf-or-hard-of-hearing-students-and-learning/ask-the-student-what-will-help-and-consider-a-learner-profile

Utilise digital tools

These rangatahi explain in Māori, NZ Sign Language, and English, the meaning behind the digital photographs they have chosen to represent something that inspires them.



Video hosted on Youtube http://youtu.be/_4Zk4WDJkhs

Closed Captions

Source:

[Ministry of Education | Te Tāhuhu o te Mātauranga](#)
https://youtu.be/_4Zk4WDJkhs

This information was downloaded/printed from the Ministry of Education's website "Inclusive Education". Except where otherwise noted it is Crown Copyright 2018.

Information on the Inclusive Education website is regularly updated so we recommend you check the website version of this information to ensure it remains current.

