

Ask the student what will help and consider a learner profile

A suggestion for implementing the strategy
'Identify needs and how to provide support'
from the Guide: [Deaf and hard of hearing](#)

Includes:

- Utilise digital tools
- Support self-advocacy with learner profiles
- Maximise the benefits of a learner profile
- Let students personalise learner profiles
- What to include in a learner profile
- Useful resources

Inclusive Education

From

Guide: [Deaf or hard of hearing students and learning](#)

Strategy: [Identify needs and how to provide support](#)

Suggestion: [Ask the student what will help and consider a learner profile](#)

Date

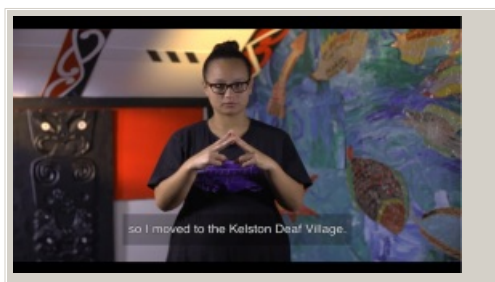
03 October 2022

Link

inclusive.tki.org.nz/guides/deaf-or-hard-of-hearing-students-and-learning/ask-the-student-what-will-help-and-consider-a-learner-profile

Utilise digital tools

These rangatahi explain in Māori, NZ Sign Language, and English, the meaning behind the digital photographs they have chosen to represent something that inspires them.



Video hosted on Youtube http://youtu.be/_4Zk4WDJkhs

Closed Captions

Source:

[Ministry of Education | Te Tāhuhu o te Mātauranga](#)
https://youtu.be/_4Zk4WDJkhs

[Inclusive Education](#)

From

Guide: [Deaf or hard of hearing students and learning](#)

Strategy: [Identify needs and how to provide support](#)

Suggestion: [Ask the student what will help and consider a learner profile](#)

Date

03 October 2022

Link

inclusive.tki.org.nz/guides/deaf-or-hard-of-hearing-students-and-learning/ask-the-student-what-will-help-and-consider-a-learner-profile

Support self-advocacy with learner profiles

Create opportunities where students can tell you what supports their learning and what gets in the way.

Having students create a learner profile for themselves is a great way to have them develop a better and fuller understanding of who they are as learners ...

This develops their independence and places them in a better position to self-advocate for the tools, learning materials, and presentation options that can optimise their learning experiences.

Naryn Searcy

Source:
UDL Resource

Inclusive Education

From

Guide: [Deaf or hard of hearing students and learning](#)

Strategy: [Identify needs and how to provide support](#)

Suggestion: [Ask the student what will help and consider a learner profile](#)

Date

03 October 2022

Link

inclusive.tki.org.nz/guides/deaf-or-hard-of-hearing-students-and-learning/ask-the-student-what-will-help-and-consider-a-learner-profile

Maximise the benefits of a learner profile

Learner profiles help teachers get to know students and what's important to them.

Encourage students to:

- express aspirations and passions
- address assumptions
- identify potential barriers to learning and wellbeing
- describe their accessibility and technology needs and preferences
- suggest beneficial teaching and learning approaches.

Inclusive Education

From

Guide: [Deaf or hard of hearing students and learning](#)

Strategy: [Identify needs and how to provide support](#)

Suggestion: [Ask the student what will help and consider a learner profile](#)

Date

03 October 2022

Link

inclusive.tki.org.nz/guides/deaf-or-hard-of-hearing-students-and-learning/ask-the-student-what-will-help-and-consider-a-learner-profile

Let students personalise learner profiles



Source:

Ministry of Education | Te Tāhuhu o te Mātauranga

<https://inclusive-live-storagestack-assetstorages3bucket-3uty0hejzw6u.s3.ap-southeast-2.amazonaws.com/public/inclusive-education/resources/files/Example%2BLearner%2BProfile-Rachel.pdf>

[View full image \(1.2 MB\)](#)

Inclusive Education

From

Guide: [Deaf or hard of hearing students and learning](#)

Strategy: [Identify needs and how to provide support](#)

Suggestion: [Ask the student what will help and consider a learner profile](#)

Date

03 October 2022

Link

inclusive.tki.org.nz/guides/deaf-or-hard-of-hearing-students-and-learning/ask-the-student-what-will-help-and-consider-a-learner-profile

What to include in a learner profile

Discuss with the student and their whānau what to include in a learner profile.

- ✓ Important people
- ✓ Cultural connections and experiences
- ✓ Languages spoken
- ✓ Things the student is good at
- ✓ Memorable life experiences
- ✓ How they like to unwind and relax
- ✓ Likes and interests
- ✓ Dislikes and things they avoid
- ✓ How they like to learn and what helps
- ✓ Things that make it hard for them to learn
- ✓ What they do when they need help

Inclusive Education

From

Guide: [Deaf or hard of hearing students and learning](#)

Strategy: [Identify needs and how to provide support](#)

Suggestion: [Ask the student what will help and consider a learner profile](#)

Date

03 October 2022

Link

inclusive.tki.org.nz/guides/deaf-or-hard-of-hearing-students-and-learning/ask-the-student-what-will-help-and-consider-a-learner-profile

Useful resources



Developing learner profiles

Read time: 3 min

This document provides general support and guidance when developing a learner profile. It includes prompts and questions, along side purpose and benefits for students.

[Download](#) PDF (211 KB)



About me

This learner profile template is a companion to "Developing learner profiles". It is an interactive PDF with questions for students to answer.

[Download](#) PDF (596 KB)

This information was downloaded/printed from the Ministry of Education's website "Inclusive Education". Except where otherwise noted it is Crown Copyright 2018.

Information on the Inclusive Education website is regularly updated so we recommend you check the website version of this information to ensure it remains current.