

Ask the learner what will help and consider a learner profile

A suggestion for implementing the strategy
'Identify needs and how to provide support'
from the Guide: [Deaf and hard of hearing](#)

Includes:

- Utilise digital tools
- Support self-advocacy with learner profiles
- Innovate with getting to know your learner
- Let ākonga personalise learner profiles
- What to include in a learner profile
- Useful resources

Inclusive Education

From

Guide: [Deaf or hard of hearing students and learning](#)

Strategy: [Identify needs and how to provide support](#)

Suggestion: [Ask the learner what will help and consider a learner profile](#)

Date

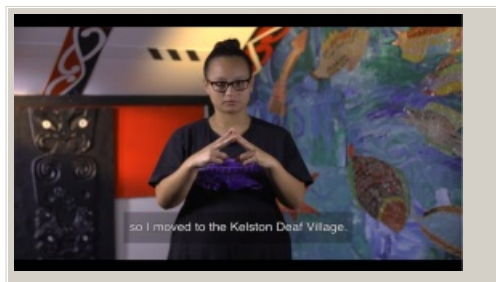
01 September 2025

Link

inclusive.tki.org.nz/guides/deaf-or-hard-of-hearing-students-and-learning/ask-the-student-what-will-help-and-consider-a-learner-profile

Utilise digital tools

These rangatahi explain in Māori, NZ Sign Language, and English, the meaning behind the digital photographs they have chosen to represent something that inspires them.



Video hosted on Youtube http://youtu.be/_4Zk4WDJkhs

Closed Captions

Source:

[Ministry of Education | Te Tāhuhu o te Mātauranga](#)
https://youtu.be/_4Zk4WDJkhs

Inclusive Education

From

Guide: [Deaf or hard of hearing students and learning](#)

Strategy: [Identify needs and how to provide support](#)

Suggestion: [Ask the learner what will help and consider a learner profile](#)

Date

01 September 2025

Link

inclusive.tki.org.nz/guides/deaf-or-hard-of-hearing-students-and-learning/ask-the-student-what-will-help-and-consider-a-learner-profile

Support self-advocacy with learner profiles

Create opportunities where students can tell you what supports their learning and what gets in the way.

Having students create a learner profile for themselves is a great way to have them develop a better and fuller understanding of who they are as learners ...

This develops their independence and places them in a better position to self-advocate for the tools, learning materials, and presentation options that can optimise their learning experiences.

Naryn Searcy

Source:

UDL Resource

Inclusive Education

From

Guide: [Deaf or hard of hearing students and learning](#)

Strategy: [Identify needs and how to provide support](#)

Suggestion: [Ask the learner what will help and consider a learner profile](#)

Date

01 September 2025

Link

inclusive.tki.org.nz/guides/deaf-or-hard-of-hearing-students-and-learning/ask-the-student-what-will-help-and-consider-a-learner-profile

Innovate with getting to know your learner

Learner profiles can help school staff build relationships with ākonga and their whānau, understand their perspectives and design learning to meet learner needs. There are many creative and innovative ways to build knowledge about your learner.

Creative alternatives to learner profiles:

1. All About Me Interviews

- One-on-one chats with a teacher or peer using simple, structured questions.
- Use visuals or yes/no prompts.
- Record answers through voice, video, or drawing:
- "What do you like at school?"
- "What helps you learn?"

2. Video Introductions / Self-Presentations

- Learners record short videos introducing themselves.
- They can show their strengths, interests, and needs.
- Great for visual and verbal expression — use prompts or interview formats.

3. Photo Collages or Vision Boards

- Learners select photos of people, places, things, or activities they like.
- Use magazines, printed photos, or digital tools (like Canva or Book Creator).
- Add labels or short captions if appropriate.

4. Learning Choice Baskets

- Use a basket or box filled with objects that represent learning preferences (e.g., headphones, timer, picture of a friend, fidget, iPad).
- The learner selects what helps them learn best.
- You can record their choices as a profile.

5. Interactive Poster or Wall Display

Create a classroom wall or board where learners can add post-its or pictures under categories:

"I feel calm when..."

"I like learning with..."

"I want to get better at..."

Inclusive Education

From

Guide: [Deaf or hard of hearing students and learning](#)

Strategy: [Identify needs and how to provide support](#)

Suggestion: [Ask the learner what will help and consider a learner profile](#)

Date

01 September 2025

Link

inclusive.tki.org.nz/guides/deaf-or-hard-of-hearing-students-and-learning/ask-the-student-what-will-help-and-consider-a-learner-profile

Let ākonga personalise learner profiles



Source:

Ministry of Education | Te Tāhuhu o te Mātauranga

<https://inclusive-live-storage-stack-asset-storage-s3bucket-3uty0hejzw6u.s3.ap-southeast-2.amazonaws.com/public/inclusive-education/resources/files/Example%2BLearner%2BProfile-Rachel.pdf>

[View full image \(1.2 MB\)](#)

Inclusive Education

From

Guide: [Deaf or hard of hearing students and learning](#)

Strategy: [Identify needs and how to provide support](#)

Suggestion: [Ask the learner what will help and consider a learner profile](#)

Date

01 September 2025

Link

inclusive.tki.org.nz/guides/deaf-or-hard-of-hearing-students-and-learning/ask-the-student-what-will-help-and-consider-a-learner-profile

What to include in a learner profile

Discuss with ākonga and their whānau what information will help inform their learning.

- ✓ Important people
- ✓ Cultural connections and experiences
- ✓ Languages spoken
- ✓ Things the student is good at
- ✓ Memorable life experiences
- ✓ How they like to unwind and relax
- ✓ Likes and interests
- ✓ Dislikes and things they avoid
- ✓ How they like to learn and what helps
- ✓ Things that make it hard for them to learn
- ✓ What they do when they need help.

Inclusive Education

From

Guide: [Deaf or hard of hearing students and learning](#)

Strategy: [Identify needs and how to provide support](#)

Suggestion: [Ask the learner what will help and consider a learner profile](#)

Date

01 September 2025

Link

inclusive.tki.org.nz/guides/deaf-or-hard-of-hearing-students-and-learning/ask-the-student-what-will-help-and-consider-a-learner-profile

Useful resources



Learning Maps

Learning maps are another practical approach for Kaiako and parents to support learners in fun and energising ways that will help to improve their learning.

Publisher: Infinity Learn Limited

[Visit website](#)



PATH Planning Process

This site provides in-depth information about the process of PATH planning from a person-centred, kotahitanga approach.

Publisher: Inclusive Solutions

[Visit website](#)



ThingLink

Allows learners to embed hotspots with text, audio, quizzes, and links onto images or videos—great for presenting their learning visually and interactively.

Publisher: ThingLink

[Visit website](#)



Avatoon – Cartoon avatar maker

Students can create personalised avatars that reflect their identity, style, and expressions—perfect for easy self-representation in digital profiles or presentations.

Publisher: Avatoon

[Visit website](#)

This information was downloaded/printed from the Ministry of Education's website "Inclusive Education". Except where otherwise noted it is Crown Copyright 2018.

Information on the Inclusive Education website is regularly updated so we recommend you check the website version of this information to ensure it remains current.