

Support processing and organisation

A suggestion for implementing the strategy 'Reduce barriers for year 9-13 students' from the Guide: [Curriculum accessibility](#)

-
- Includes:**
- Offer options to manage workloads
 - Support concentration and memory
 - Support planning and organising
 - Offer visual timers
 - Use mind mapping

Inclusive Education

From

Guide: [Curriculum accessibility](#)

Strategy: [Reduce barriers for year 9-13 students](#)

Suggestion: [Support processing and organisation](#)

Date

03 October 2022

Link

inclusive.tki.org.nz/guides/curriculum-accessibility/support-processing-and-organisation

Offer options to manage workloads

Students at Fraser High School reflects on how they managing their time and meet learning goals.



Video hosted on Vimeo <http://vimeo.com/73592179>

Closed Captions

Source:

[Enabling e-Learning \(NZ\)](#)

<http://elearning.tki.org.nz/Teaching/Curriculum/Fraser-High-School-curriculum-integration-project-students-reflect>

Inclusive Education

From

Guide: [Curriculum accessibility](#)

Strategy: [Reduce barriers for year 9–13 students](#)

Suggestion: [Support processing and organisation](#)

Date

03 October 2022

Link

inclusive.tki.org.nz/guides/curriculum-accessibility/support-processing-and-organisation

Support concentration and memory

Ideas for supporting concentration and short-term memory.

- ✓ Monitor and moderate the classroom for visual and auditory distractions.
- ✓ Present information in a range of ways over an extended period of time (for example, a week) to help students retain information, build up their understanding and familiarity of the topic, and stay stimulated and focused.
- ✓ Discuss the effectiveness of the classroom with students and remove barriers and make modifications where needed.
- ✓ In online environments make effective use of visual prompts and cues to support understanding and navigation. Make useful hyperlinks to background knowledge or previous learning to increase connections.
- ✓ Schedule regular short breaks to allow students to move around.

Inclusive Education

From

Guide: [Curriculum accessibility](#)

Strategy: [Reduce barriers for year 9–13 students](#)

Suggestion: [Support processing and organisation](#)

Date

03 October 2022

Link

inclusive.tki.org.nz/guides/curriculum-accessibility/support-processing-and-organisation

Inclusive Education

From

Guide: [Curriculum accessibility](#)

Strategy: [Reduce barriers for year 9–13 students](#)

Suggestion: [Support processing and organisation](#)

Date

03 October 2022

Link

inclusive.tki.org.nz/guides/curriculum-accessibility/support-processing-and-organisation

Support planning and organising

Suggestions for supporting students' planning and organising.

- ✓ Use charts, visual calendars, colour coded schedules, visible timers and cues to increase the predictability of regular activities and transitions.
- ✓ Encourage students to use their mobile devices to schedule alerts and reminders for regular and novel events and task deadlines.
- ✓ Highlight patterns, critical features, big ideas and relationships, using visuals, mind maps, 3-D manipulatives, outlines, flow charts, and real objects.
- ✓ Model and make available graphic organisers and flow charts to support planning and thinking in all curriculum areas.
- ✓ Break tasks and lengthy assignments into small manageable parts. Schedule workflow using [Trello](#) to organise what needs to be done and when.
- ✓ Provide options so that students can submit work online.

Inclusive Education

From

Guide: [Curriculum accessibility](#)

Strategy: [Reduce barriers for year 9–13 students](#)

Suggestion: [Support processing and organisation](#)

Date

03 October 2022

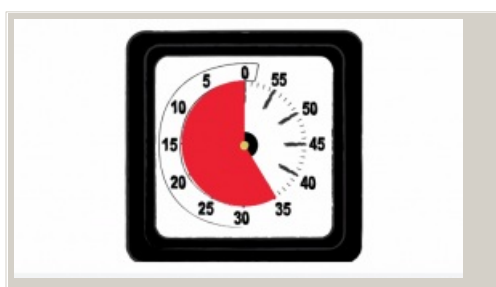
Link

inclusive.tki.org.nz/guides/curriculum-accessibility/support-processing-and-organisation

Offer visual timers

Visual timers, can help students "see" the time they have for a task.

This can reduce stress and increase motivation.



Video hosted on Vimeo <http://vimeo.com/27596627>

No captions or transcript

Source:

[Time Timer \(US\)](#)

<http://vimeo.com/27596627>

Inclusive Education

From

Guide: [Curriculum accessibility](#)

Strategy: [Reduce barriers for year 9–13 students](#)

Suggestion: [Support processing and organisation](#)

Date

03 October 2022

Link

inclusive.tki.org.nz/guides/curriculum-accessibility/support-processing-and-organisation

Use mind mapping



Source:

Ministry of Education | Te Tāhuhu o te Mātauranga

[View full image \(494 KB\)](#)

This information was downloaded/printed from the Ministry of Education's website "Inclusive Education". Except where otherwise noted it is Crown Copyright 2018.

Information on the Inclusive Education website is regularly updated so we recommend you check the website version of this information to ensure it remains current.