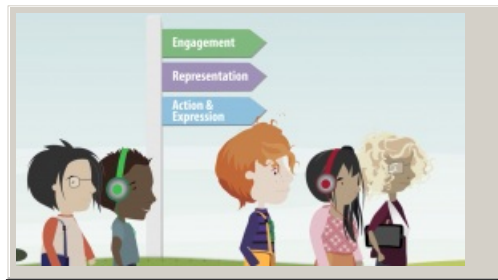


Plan using Universal Design for Learning (UDL)

UDL is an approach to designing learning that is accessible for all learners. It helps to create barrier-free learning environments.

UDL enables learners to access the curriculum in a way that best works for them.



Video hosted on Vimeo <http://vimeo.com/220717678>

Closed Captions

Source:

Ministry of Education | Te Tāhuhu o te Mātauranga
<https://vimeo.com/220717678>

This information was downloaded/printed from the Ministry of Education's website "Inclusive Education". Except where otherwise noted it is Crown Copyright 2018.

Information on the Inclusive Education website is regularly updated so we recommend you check the website version of this information to ensure it remains current.

