

Increase participation and build confidence

A suggestion for implementing the strategy 'Reduce barriers for year 9-13 students' from the Guide: [Curriculum accessibility](#)

Includes:

Connect with students' passions

Build confidence using multiple approaches

Monitor students' well-being

Encourage sustained participation

Ask what helps

Inclusive Education

From

Guide: [Curriculum accessibility](#)

Strategy: [Reduce barriers for year 9–13 students](#)

Suggestion: [Increase participation and build confidence](#)

Date

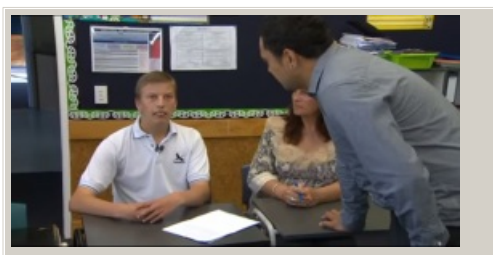
19 June 2026

Link

inclusive.tki.org.nz/guides/curriculum-accessibility/increase-participation-and-build-confidence

Connect with students' passions

A student with autism and cerebral palsy demonstrates his passion for te reo Māori.



Video hosted on Youtube <http://youtu.be/qI6BNA2ACFU>

Closed Captions

Source:

[Te Karere TVNZ \(NZ\)](#)

<http://youtu.be/qI6BNA2ACFU>

Inclusive Education

From

Guide: [Curriculum accessibility](#)

Strategy: [Reduce barriers for year 9–13 students](#)

Suggestion: [Increase participation and build confidence](#)

Date

19 June 2026

Link

inclusive.tki.org.nz/guides/curriculum-accessibility/increase-participation-and-build-confidence

Build confidence using multiple approaches

Discuss with the student what will support their participation and confidence.

Build the suggestions into your teaching practice.

- ✓ Ask students how they learn best.
- ✓ Use students' interests and strengths as a basis for teaching.
- ✓ Recognise and eliminate situations that students find embarrassing, such as reading aloud or making speeches.
- ✓ Feed back successes to students' parents and whānau.
- ✓ Recognise avoidance strategies and provide support and encouragement.
- ✓ Give students extra time so they have the satisfaction of completing work.
- ✓ Make learning supports such as timers, text-to-speech, and organisational tools available to students.
- ✓ Enable students to show their strengths and contribute their ideas in collaborative work, without the challenge of lengthy reading and writing tasks.
- ✓ Give specific prompts and feedback quickly, rather than waiting for the student to fail.

Inclusive Education

From

Guide: [Curriculum accessibility](#)

Strategy: [Reduce barriers for year 9–13 students](#)

Suggestion: [Increase participation and build confidence](#)

Date

19 June 2026

Link

inclusive.tki.org.nz/guides/curriculum-accessibility/increase-participation-and-build-confidence

Monitor students' well-being



Source:

[Adreson](#)

<http://www.flickr.com/photos/adreson/3276163756/sizes/l/in/photolist-5Zvcm1-62coUH-62cVQw-63CvwC-63CvA7-63CvE9-64nKir-64Uj7k-68LbF9-69WAYM-6a3ATz-6aRR51-6d21Ce-6e6DCn-6evMi4-6feXAf-6qduJf-6sknau-6DLBj9-6EU5MW-6Pw6W7-6ZTouA-77j9Te-7bCHZX-7hb2zy-7hHg82-7ieb>

[View full image \(363 KB\)](#)

Inclusive Education

From

Guide: [Curriculum accessibility](#)

Strategy: [Reduce barriers for year 9–13 students](#)

Suggestion: [Increase participation and build confidence](#)

Date

19 June 2026

Link

inclusive.tki.org.nz/guides/curriculum-accessibility/increase-participation-and-build-confidence

Encourage sustained participation

Discuss with students what will support their participation and motivation.

Build these suggestions into your teaching practice.

- ✓ Establish clear classroom routines.
- ✓ Teach strategies to help ākongā when they get stuck.
- ✓ Break work into short manageable chunks.
- ✓ Give positive, timely feedback.
- ✓ Brief students about changes to routine.
- ✓ When changing classroom layout, provide a plan of new layout and when it will happen.
- ✓ Provide easy access to quiet spaces for working or winding down.
- ✓ Schedule brain breaks.
- ✓ Notice avoidance tactics or increasing anxiety, implement supports quickly.
- ✓ Offer leadership opportunities based on knowledge of student's expertise and interests.
- ✓ Connect learning to student's interests.
- ✓ Foster tuākana-teina relationships where students support each other.

Inclusive Education

From

Guide: [Curriculum accessibility](#)

Strategy: [Reduce barriers for year 9–13 students](#)

Suggestion: [Increase participation and build confidence](#)

Date

19 June 2026

Link

inclusive.tki.org.nz/guides/curriculum-accessibility/increase-participation-and-build-confidence

Ask what helps

Discuss possible supports and make these available to all students.

Tate from Onslow College explains what works for him in the classroom.



Video hosted on Vimeo <http://vimeo.com/100662200>

Closed Captions

Source:

[Ministry of Education, inclusive education videos \(NZ\)](#)

<https://vimeo.com/showcase/2950799>

This information was downloaded/printed from the Ministry of Education's website "Inclusive Education". Except where otherwise noted it is Crown Copyright 2018.

Information on the Inclusive Education website is regularly updated so we recommend you check the website version of this information to ensure it remains current.