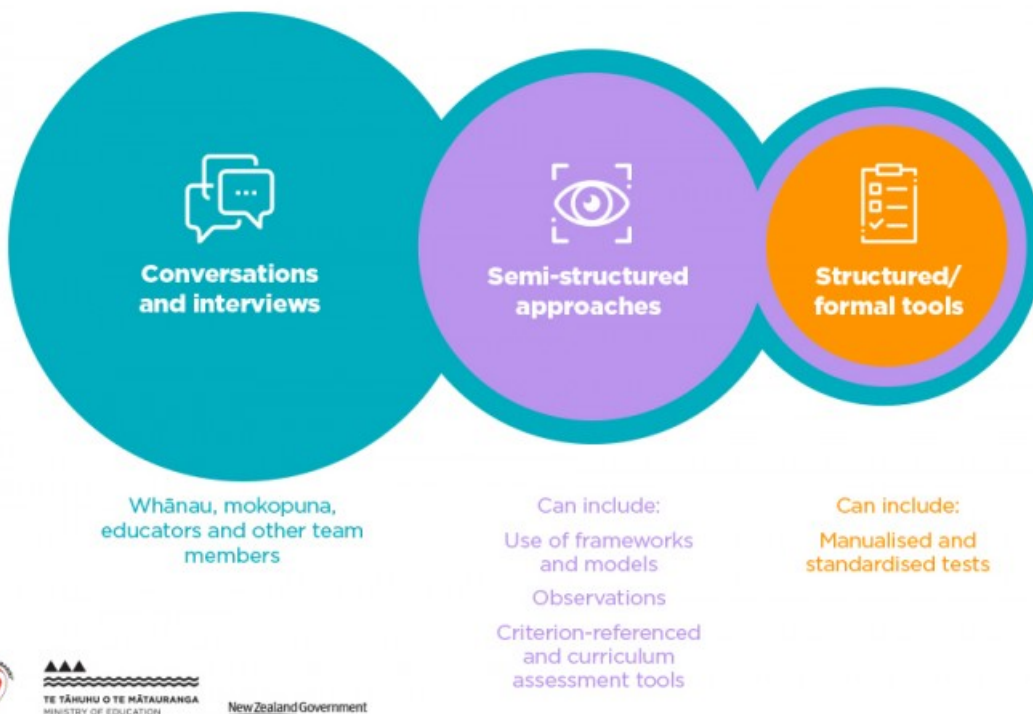


Ways to notice

Kohikohi – Gathering information to deepen understanding

Least intrusive, most inclusive



New Zealand Government

Source:

Ministry of Education | Te Tāhuhu o te Mātauranga
<https://hepikorua.education.govt.nz/>

[View full image \(259 KB\)](#)

A culture of care depends on kaiako pre-empting or noticing when a child or group of learners may require specific support on their learning journey.

This information was downloaded/printed from the Ministry of Education's website "Inclusive Education". Except where otherwise noted it is Crown Copyright 2018.

Information on the Inclusive Education website is regularly updated so we recommend you check the website version of this information to ensure it remains current.

