

Inclusive Education

From

Guide: [Supporting learners with acquired brain injury](#)

Strategy: [Non-traumatic brain injury: Support a return to learning and activity](#)

Suggestion: [Understanding the injury and its implications](#)

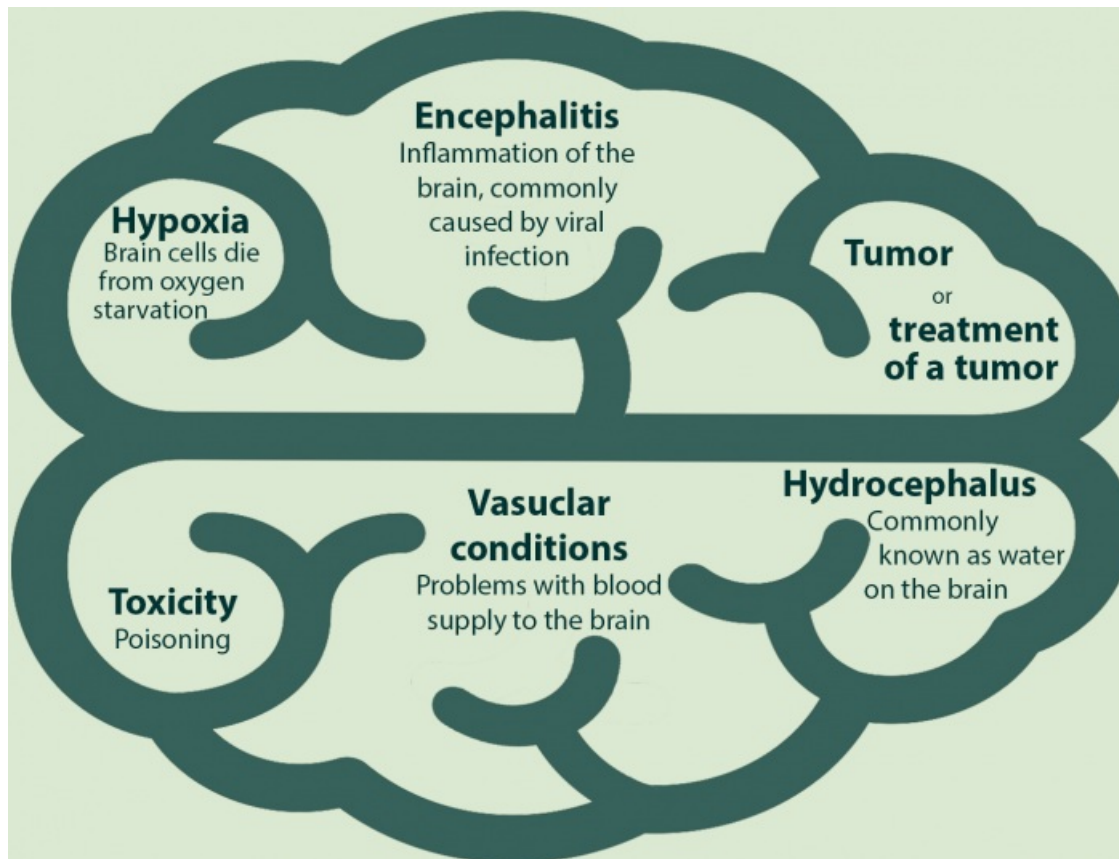
Date

25 April 2024

Link

inclusive.tki.org.nz/guides/brain-injury/understand-the-injury-2

What is a non-traumatic brain injury?



[View full image \(245 KB\)](#)

This information was downloaded/printed from the Ministry of Education's website "Inclusive Education". Except where otherwise noted it is Crown Copyright 2018.

Information on the Inclusive Education website is regularly updated so we recommend you check the website version of this information to ensure it remains current.

