

Support physical recovery and provide opportunities for rest

A suggestion for implementing the strategy

'Non-traumatic brain injury: Support a return to learning and activity' from the Guide:

[Acquired brain injury and learning](#)

Includes:

- Notice when support is needed
- Embed rehabilitation activities
- Monitor fatigue, offer quiet zones
- Useful teaching approaches
- Reflection questions
- Useful resources

Inclusive Education

From

Guide: [Supporting learners with acquired brain injury](#)

Strategy: [Non-traumatic brain injury: Support a return to learning and activity](#)

Suggestion: [Support physical recovery and provide opportunities for rest](#)

Date

29 June 2026

Link

inclusive.tki.org.nz/guides/brain-injury/support-physical-recovery-2

Notice when support is needed

Many symptoms of a brain injury can often be misinterpreted.

Instead, these symptoms are signals that a brain is still healing and needs a supportive environment to aid recovery.

- feeling tired, just wanting to sleep
- daydreaming, looking blank
- doesn't seem like her/himself
- easily frustrated
- shows no interest in playing
- unusually emotional
- sore head or other pains
- yawning, dozing off
- listless or pale.

Inclusive Education

From

Guide: [Supporting learners with acquired brain injury](#)

Strategy: [Non-traumatic brain injury: Support a return to learning and activity](#)

Suggestion: [Support physical recovery and provide opportunities for rest](#)

Date

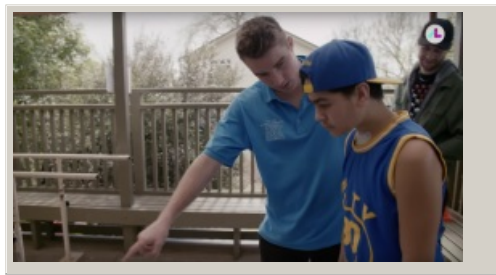
29 June 2026

Link

inclusive.tki.org.nz/guides/brain-injury/support-physical-recovery-2

Embed rehabilitation activities

When the rehabilitation team visit document activities and assistance with video and photos.



Video hosted on Youtube <http://youtu.be/Xp--W4QaNSU>

These will help keep everyone on the same page.

Closed Captions

Source:

[Attitude \(NZ\)](#)

<https://www.youtube.com/channel/UC1pEecEFODR1WZtH5woZTpw>

Inclusive Education

From

Guide: [Supporting learners with acquired brain injury](#)

Strategy: [Non-traumatic brain injury: Support a return to learning and activity](#)

Suggestion: [Support physical recovery and provide opportunities for rest](#)

Date

29 June 2026

Link

inclusive.tki.org.nz/guides/brain-injury/support-physical-recovery-2

Monitor fatigue, offer quiet zones



Source:

[Pixabay](#)

<https://pixabay.com/en/quiet-zone-sign-stop-georgetown-2982675/>

[View full image \(859 KB\)](#)

Inclusive Education

From

Guide: [Supporting learners with acquired brain injury](#)

Strategy: [Non-traumatic brain injury: Support a return to learning and activity](#)

Suggestion: [Support physical recovery and provide opportunities for rest](#)

Date

29 June 2026

Link

inclusive.tki.org.nz/guides/brain-injury/support-physical-recovery-2

Useful teaching approaches

Set up an appropriate learning environment and select teaching approaches that support the recovery of a child or young person with a concussion.

Seek feedback on what's helpful.

Adjust as needed.

- ✓ Provide the learner with access to a comfortable indoor or outdoor space to take a complete break or have a sleep.
- ✓ Give the learner the choice to work where they are most comfortable.
- ✓ Provide access to food and drink throughout the day.
- ✓ Provide spaces to play or study free from additional stimulation (sound, movement, bright light, clutter or a number of objects on desk).
- ✓ Provide opportunities to transition classes or activities early to avoid crowded spaces.
- ✓ Timetable the most important learning tasks at the times when the learner has the most energy.
- ✓ Include a mix of non-academic subjects and a focus on cognitive strengths.
- ✓ Reduce or modify workload expectations.
- ✓ Allow additional time to complete activities and assignments.
- ✓ Excuse the learner from less important activities.
- ✓ Give time to talk. Children and young people are often distressed and frustrated by their inability to perform.

Inclusive Education

From

Guide: [Supporting learners with acquired brain injury](#)

Strategy: [Non-traumatic brain injury: Support a return to learning and activity](#)

Suggestion: [Support physical recovery and provide opportunities for rest](#)

Date

29 June 2026

Link

inclusive.tki.org.nz/guides/brain-injury/support-physical-recovery-2

Reflection questions

Adjust and adapt for your own context.

How will you monitor a child or young person's level of fatigue?

How will you offer rest stops?

How will you ensure all staff are aware of a child or young person's safety needs during break times and during play or sporting activities?

What processes will you use to ensure that communication with the child or young person's whānau is effective and timely?

Where might the design of the learning environment increase fatigue?

[Inclusive Education](#)

From

Guide: [Supporting learners with acquired brain injury](#)

Strategy: [Non-traumatic brain injury: Support a return to learning and activity](#)

Suggestion: [Support physical recovery and provide opportunities for rest](#)

Date

29 June 2026

Link

inclusive.tki.org.nz/guides/brain-injury/support-physical-recovery-2

Useful resources



Fatigue management

Read time: 2 min

This leaflet provides suggestions and techniques for managing fatigue.

[Download PDF](#)

This information was downloaded/printed from the Ministry of Education's website "Inclusive Education". Except where otherwise noted it is Crown Copyright 2018.

Information on the Inclusive Education website is regularly updated so we recommend you check the website version of this information to ensure it remains current.