

Inclusive Education

From

Guide: [Behaviour and learning](#)

Strategy: [Be proactive](#)

Suggestion: [Recognise and remove barriers to learning](#)

Date

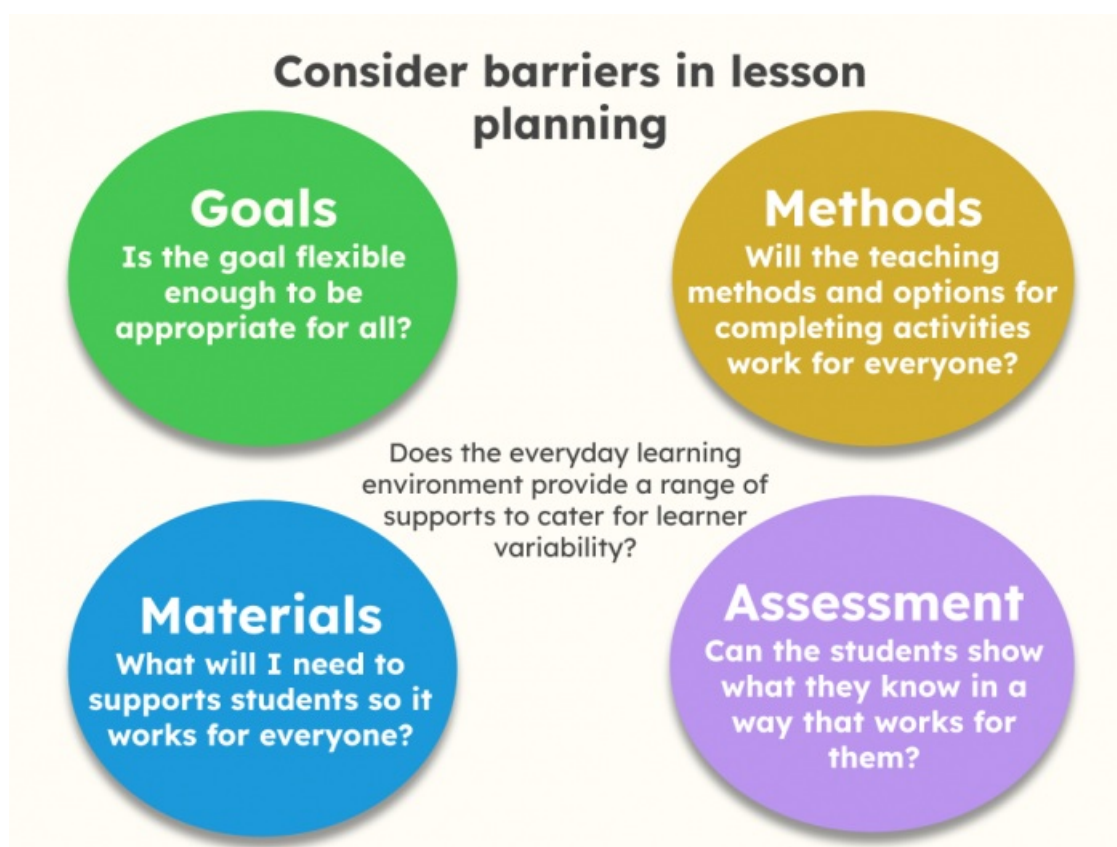
06 June 2026

Link

[inclusive.tki.org.nz/guides/behaviour-and-learning/recognise-and-remove-barriers-to-learning](https://inclusive.tki.org.nz/guides/behaviour-and-learning/recognise-and-remove-barriers-to-learning)

---

## Consider barriers in lesson planning



Source:

[Novak Education](#)

<https://www.novakeducation.com/resources>

[View full image \(128 KB\)](#)

Universal Design for Learning (UDL) identifies four key components of lesson planning to avoid unintentional barriers for learners.

This information was downloaded/printed from the Ministry of Education's website "Inclusive Education". Except where otherwise noted it is Crown Copyright 2018.

Information on the Inclusive Education website is regularly updated so we recommend you check the website version of this information to ensure it remains current.

---

