

## Inclusive Education

From

Guide: [Behaviour and learning](#)

Strategy: [Collaboratively develop a safe and caring culture and climate](#)

Suggestion: [Design the physical environment to support self regulation](#)

Date

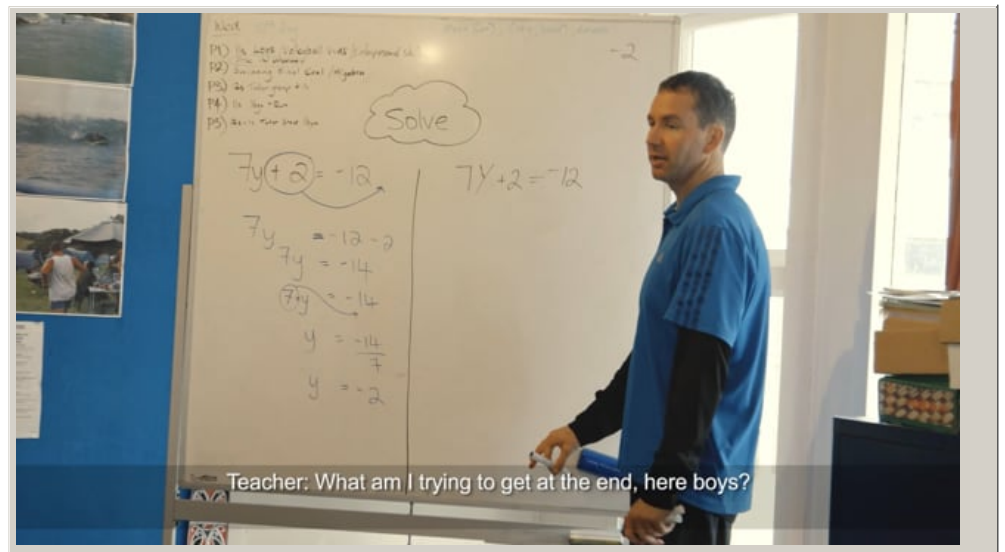
13 October 2021

Link

[inclusive.tki.org.nz/guides/behaviour-and-learning/design-the-physical-environment-to-support-self-regulation](https://inclusive.tki.org.nz/guides/behaviour-and-learning/design-the-physical-environment-to-support-self-regulation)

# Design for connection

“The environment needs to be conducive to you making a connection so that mutual trust, respect, all those things, can occur.”



Video hosted on Vimeo <http://vimeo.com/225192007>

Closed Captions

Source:

[Ministry of Education | Te Tāhuhu o te Mātauranga \(NZ\)](#)

<https://vimeo.com/user25073968>

This information was downloaded/printed from the Ministry of Education's website "Inclusive Education". Except where otherwise noted it is Crown Copyright 2018.

Information on the Inclusive Education website is regularly updated so we recommend you check the website version of this information to ensure it remains current.

