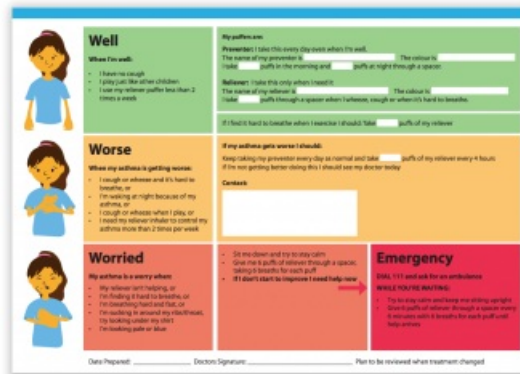


Ask whānau for an up-to-date action plan



Source:

Asthma + Respiratory Foundation NZ

<https://s3-ap-southeast-2.amazonaws.com/assets.asthmafoundation.org.nz/documents/Asthma-Management-Plan-Child-Resource.pdf>

[View full image \(1.1 MB\)](#)

This information was downloaded/printed from the Ministry of Education's website "Inclusive Education". Except where otherwise noted it is Crown Copyright 2018.

Information on the Inclusive Education website is regularly updated so we recommend you check the website version of this information to ensure it remains current.

