

Provide professional learning for all staff

A suggestion for implementing the strategy

'Create inclusive systems' from the Guide:

[Allergies and learning](#)

Includes:

Identify staff needs

Public health nurses provide training

Partner with outside agencies

Early learning services

Display emergency instructions

Useful resources

Inclusive Education

From

Guide: [Allergies and learning](#)

Strategy: [Create inclusive systems](#)

Suggestion: [Provide professional learning for all staff](#)

Date

03 October 2022

Link

inclusive.tki.org.nz/guides/allergies-and-learning/provide-professional-learning-for-all-staff

Identify staff needs

Ensure all staff know how to:

- minimise a learner's exposure to known allergens
- recognise signs and symptoms of a mild-to-moderate allergic reaction
- locate a learner's EpiPen
- respond appropriately in the event of anaphylaxis
- administer adrenaline with an EpiPen
- follow agreed systems and processes, for example, for accessing allergy action plans or accessing medication
- provide immediate first-aid assistance.

[Inclusive Education](#)

From

Guide: [Allergies and learning](#)

Strategy: [Create inclusive systems](#)

Suggestion: [Provide professional learning for all staff](#)

Date

03 October 2022

Link

inclusive.tki.org.nz/guides/allergies-and-learning/provide-professional-learning-for-all-staff

Public health nurses provide training

Public health nurses provide annual training for staff on:

- what allergy is
- what anaphylaxis is
- triggers for allergies and anaphylaxis
- recognising anaphylaxis
- preventing anaphylaxis
- what to do in the event of a child having a severe allergic reaction
- using an adrenaline autoinjector.

Inclusive Education

From

Guide: [Allergies and learning](#)

Strategy: [Create inclusive systems](#)

Suggestion: [Provide professional learning for all staff](#)

Date

03 October 2022

Link

inclusive.tki.org.nz/guides/allergies-and-learning/provide-professional-learning-for-all-staff

Partner with outside agencies

These agencies offer professional learning.

- ✓ [Allergy New Zealand](#) – guidelines and resources to assist parents and caregivers, educators, and school staff.
- ✓ [Anaphylaxis e-training](#) – free online modules for early childhood services and schools, developed by ASCIA.
- ✓ [DHB Public Health Nurses \(PHNs\)](#) – schools are allocated a PHN to support and advise on children's health and liaise with family doctors, specialists, and other health providers.
- ✓ [EpiClub®](#) – provide an information resource pack for New Zealand teachers and students. The pack contains a range of tools that explain anaphylaxis and what to do in an allergic emergency. It includes a free EpiPen® training device.
- ✓ NZQA-approved, first-aid training for all staff. Check that the course provided includes training about anaphylaxis and trains according to ASCIA guidelines.

Inclusive Education

From

Guide: [Allergies and learning](#)

Strategy: [Create inclusive systems](#)

Suggestion: [Provide professional learning for all staff](#)

Date

03 October 2022

Link

inclusive.tki.org.nz/guides/allergies-and-learning/provide-professional-learning-for-all-staff

Early learning services

A paediatric dietitian shares how childcare providers can ensure safe environments for children with food hypersensitivities.



Video hosted on Youtube <http://youtu.be/rmarUMOyIKU>

This is part 1, [view part 2](#) of the series.

Closed Captions

Source:

[safe foodTV \(UK\)](#)

<https://www.youtube.com/watch?v=rmarUMOyIKU>

Inclusive Education

From

Guide: Allergies and learning

Strategy: Create inclusive systems

Suggestion: Provide professional learning for all staff

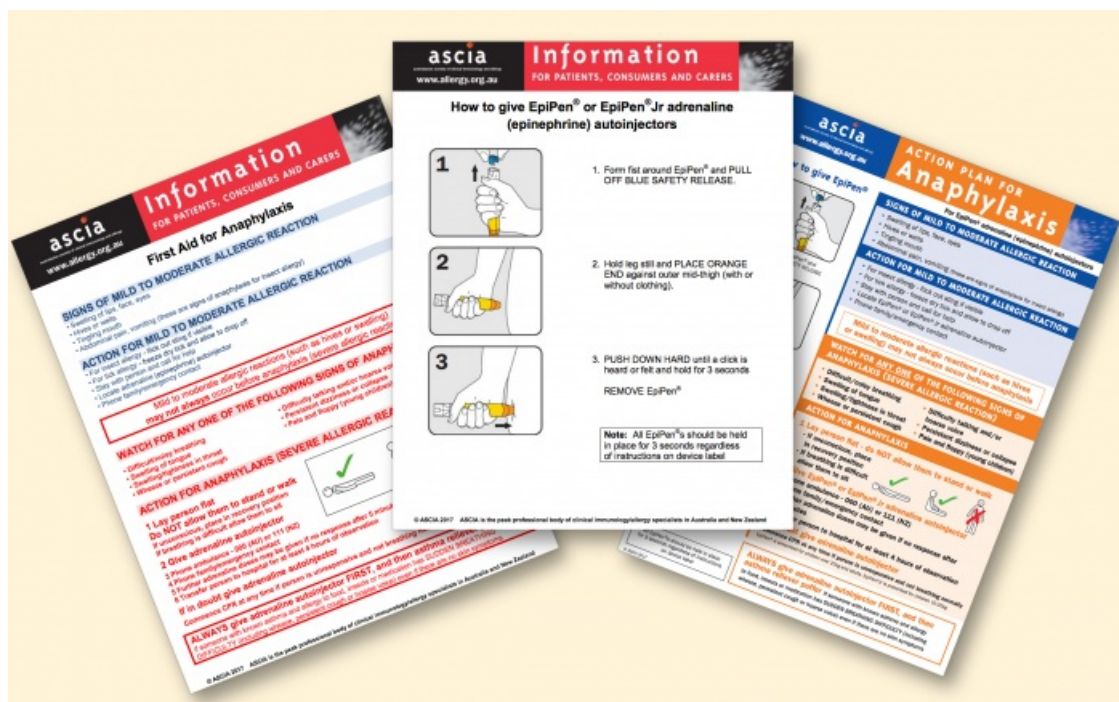
Date

03 October 2022

Link

[inclusive.tki.org.nz/guides/allergies-and-learning/provide-professional-learning-for-all-staff](https://www.allergy.org.au/health-professionals/allergies-and-learning/provide-professional-learning-for-all-staff)

Display emergency instructions



Source:

ASCIA

<https://www.allergy.org.au/health-professionals/anaphylaxis-resources>

[View full image \(1.8 MB\)](#)

Inclusive Education

From

Guide: [Allergies and learning](#)

Strategy: [Create inclusive systems](#)

Suggestion: [Provide professional learning for all staff](#)

Date

03 October 2022

Link

inclusive.tki.org.nz/guides/allergies-and-learning/provide-professional-learning-for-all-staff

Useful resources



ASCIA anaphylaxis e-training for schools and early childhood education/care

These are practical online training modules.

Publisher: Australasian Society of Clinical Immunology and Allergy

[Visit website](#)



Allergy and Anaphylaxis Australia

This website provides practical information about allergies and anaphylaxis and resources for parents and schools

Publisher: Allergy & Anaphylaxis Australia

[Visit website](#)



Allergy and Anaphylaxis Guidelines for Schools and Kura

Read time: 37 min

Guidelines to support school leadership, management, and teachers throughout New Zealand to manage allergies and anaphylaxis.

Publisher: Allergy New Zealand

[Visit website](#)

This information was downloaded/printed from the Ministry of Education's website "Inclusive Education". Except where otherwise noted it is Crown Copyright 2018.

Information on the Inclusive Education website is regularly updated so we recommend you check the website version of this information to ensure it remains current.