

Inclusive Education

From

Guide: [Universal Design for Learning](#)

Strategy: [Design considerations in secondary settings](#)

Suggestion: [Match teaching methods to student preferences](#)

Date

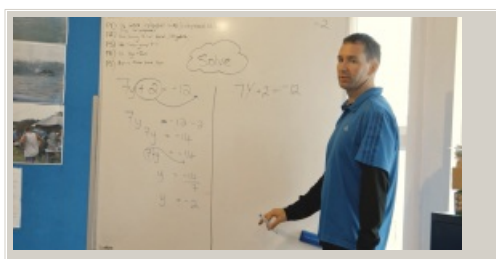
17 May 2024

Link

inclusive.tki.org.nz/guides/universal-design-for-learning/match-teaching-methods-to-student-preferences

Design for engagement

Wayne Robinson describes how the design of the physical environment "needs to be conducive to you making a connection".



Video hosted on Vimeo <http://vimeo.com/225192007>

Closed Captions

Source:

[Ministry of Education, inclusive education videos \(NZ\)](#)

<https://vimeo.com/album/2950799>

This information was downloaded/printed from the Ministry of Education's website "Inclusive Education". Except where otherwise noted it is Crown Copyright 2018.

Information on the Inclusive Education website is regularly updated so we recommend you check the website version of this information to ensure it remains current.

