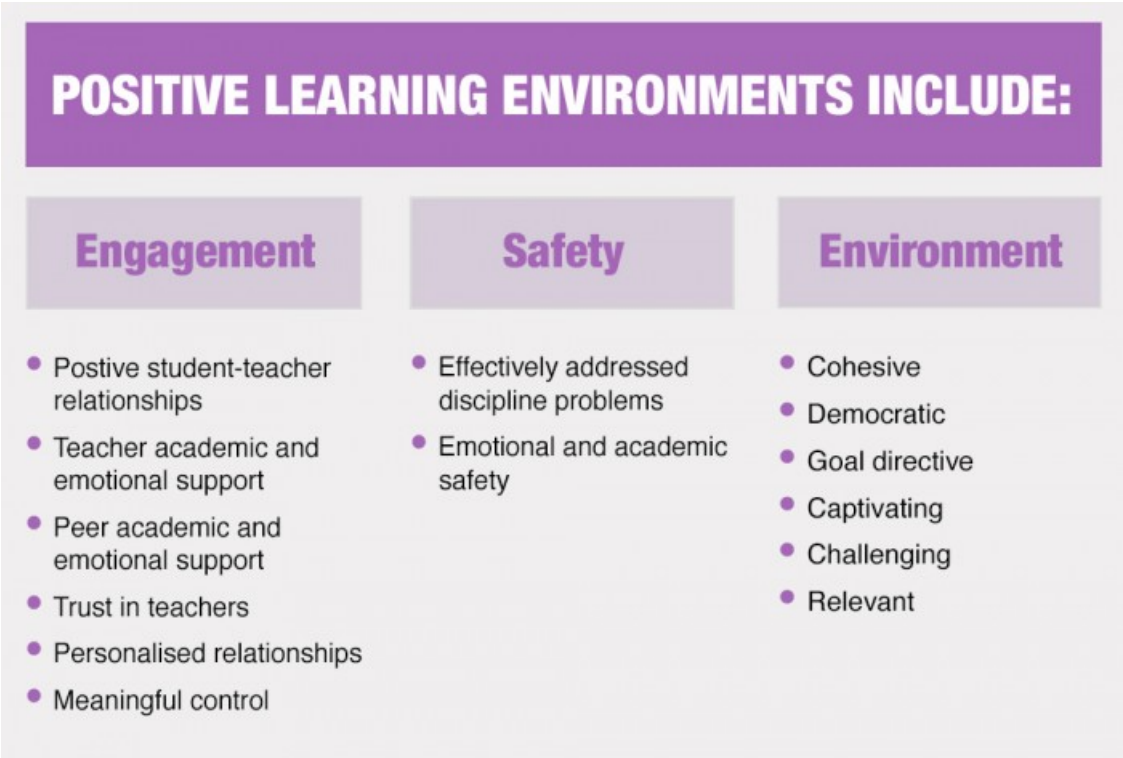


# Create a positive environment



Source:  
[Teaching the Whole Child](https://gtlcenter.org/products-resources/teaching-whole-child-instructional-practices-support-social-emotional-learning)  
<https://gtlcenter.org/products-resources/teaching-whole-child-instructional-practices-support-social-emotional-learning>

[View full image \(229 KB\)](#)

This information was downloaded/printed from the Ministry of Education's website "Inclusive Education". Except where otherwise noted it is Crown Copyright 2018.

Information on the Inclusive Education website is regularly updated so we recommend you check the website version of this information to ensure it remains current.

