

# Create safe, inclusive environments with students

A suggestion for implementing the strategy 'Design inclusive school-wide systems and processes' from the Guide: [LGBTIQA+ students](#)

---

## **Includes:**

- Seek diverse perspectives
- Engage students as partners
- Acknowledge expertise
- Plan environments together
- Introduce students to UDL
- Useful resources

Inclusive Education

From

Guide: [Supporting LGBTIQA+ students](#)

Strategy: [Design inclusive school-wide systems and processes](#)

Suggestion: [Create safe, inclusive environments with students](#)

Date

18 May 2024

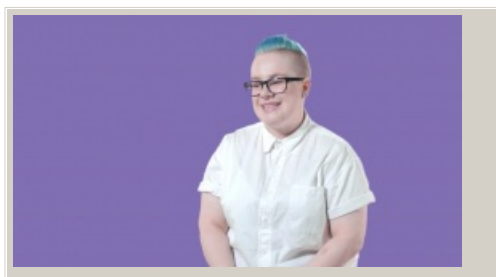
Link

[inclusive.tki.org.nz/guides/supporting-lgbtiqa-students/create-safe-inclusive-environments-with-students](https://inclusive.tki.org.nz/guides/supporting-lgbtiqa-students/create-safe-inclusive-environments-with-students)

---

## Seek diverse perspectives

Young people discuss their experiences of school and reflect on how to create spaces where we all belong.



Video hosted on Vimeo [http://vimeo.com/138438744](https://vimeo.com/138438744)

Closed Captions

**Source:**

[Inside Out - RainbowYOUTH \(NZ\)](#)

<http://insideout.ry.org.nz/ep5/>

## Inclusive Education

From

Guide: [Supporting LGBTIQ+ students](#)

Strategy: [Design inclusive school-wide systems and processes](#)

Suggestion: [Create safe, inclusive environments with students](#)

Date

18 May 2024

Link

[inclusive.tki.org.nz/guides/supporting-lgbtqi+students/create-safe-inclusive-environments-with-students](https://inclusive.tki.org.nz/guides/supporting-lgbtqi+students/create-safe-inclusive-environments-with-students)

---

# Engage students as partners

Student-led groups can provide advice and guidance on the development of supportive and inclusive environments.

Groups could include:

- diversity groups
- Queer Straight Alliances
- peer sexuality support groups
- lunch forums and discussion groups
- school health councils.

## Inclusive Education

From

Guide: [Supporting LGBTIQ+ students](#)

Strategy: [Design inclusive school-wide systems and processes](#)

Suggestion: [Create safe, inclusive environments with students](#)

Date

18 May 2024

Link

[inclusive.tki.org.nz/guides/supporting-lgbtika-students/create-safe-inclusive-environments-with-students](https://inclusive.tki.org.nz/guides/supporting-lgbtika-students/create-safe-inclusive-environments-with-students)

---

# Acknowledge expertise

Recognise the expertise of LGBTIQ+ young people through:

- ✓ building the capacity of LGBTIQ+ young people to contribute to school-wide events and decisions
- ✓ seeking student feedback on issues and ideas
- ✓ creating opportunities to seek student perspectives
- ✓ including students in school reviews
- ✓ inviting representation on the student council
- ✓ developing inclusive schooling and anti-bullying policies in partnership with students.

Inclusive Education

From

Guide: [Supporting LGBTIQ+ students](#)

Strategy: [Design inclusive school-wide systems and processes](#)

Suggestion: [Create safe, inclusive environments with students](#)

Date

18 May 2024

Link

[inclusive.tki.org.nz/guides/supporting-lgbtiqa-students/create-safe-inclusive-environments-with-students](https://inclusive.tki.org.nz/guides/supporting-lgbtiqa-students/create-safe-inclusive-environments-with-students)

## Plan environments together



Source:

Ministry of Education | Te Tāhuhu o te Mātauranga

[View full image \(525 KB\)](#)

## Inclusive Education

From

Guide: [Supporting LGBTIQA+ students](#)

Strategy: [Design inclusive school-wide systems and processes](#)

Suggestion: [Create safe, inclusive environments with students](#)

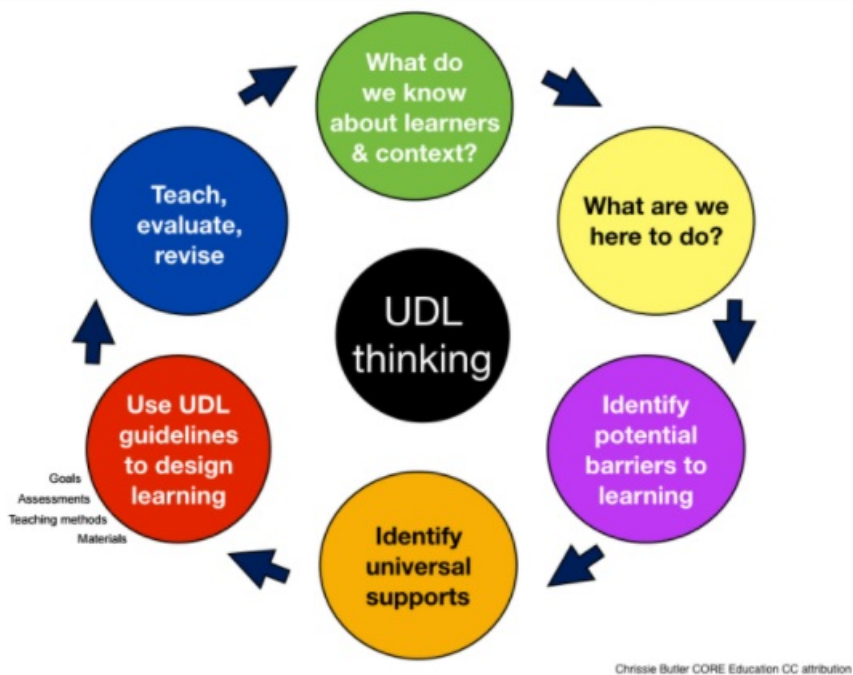
Date

18 May 2024

Link

[inclusive.tki.org.nz/guides/supporting-lgbtiqa-students/create-safe-inclusive-environments-with-students](https://inclusive.tki.org.nz/guides/supporting-lgbtiqa-students/create-safe-inclusive-environments-with-students)

# Introduce students to UDL



Source:

CORE Education

<https://core-ed.org/>

[View full image \(135 KB\)](#)

## [Inclusive Education](#)

From

Guide: [Supporting LGBTIQA+ students](#)

Strategy: [Design inclusive school-wide systems and processes](#)

Suggestion: [Create safe, inclusive environments with students](#)

Date

18 May 2024

Link

[inclusive.tki.org.nz/guides/supporting-lgbtiqa-students/create-safe-inclusive-environments-with-students](https://inclusive.tki.org.nz/guides/supporting-lgbtiqa-students/create-safe-inclusive-environments-with-students)

---

## Useful resources



### Supporting LGBTI young people in New Zealand

Read time: 18 min

This document outlines six objectives to improve the lives of LGBTIQ+ young people in New Zealand. Commissioned by the Ministry of Youth Development.

Publisher: Ministry of Social Development

[Visit website](#)



### Affirming diversity of sexualities and gender identities in the school community

Read time: 36 min

Guidelines to assist boards of trustees and PPTA branches to consider how well their schools recognise and affirm diversity of sexualities and gender identities. Published by the PPTA.

Publisher: New Zealand Post Primary Teachers' Association

[Visit website](#)

This information was downloaded/printed from the Ministry of Education's website "Inclusive Education". Except where otherwise noted it is Crown Copyright 2018.

Information on the Inclusive Education website is regularly updated so we recommend you check the website version of this information to ensure it remains current.