

Make cultural links between Māori students stories and experiences to new ideas and concepts

A suggestion for implementing the strategy

'Co-design a culturally sustaining environment' from the Guide: [Supporting ākonga Māori](#)

Includes:

- Develop a culturally responsive approach
- Use authentic learning contexts
- Connect culture to learning
- Connect to personal experiences
- Support self-advocacy
- Useful resources

Inclusive Education

From

Guide: [Supporting ākonga Māori](#)

Strategy: [Co-design a culturally sustaining environment](#)

Suggestion: [Make cultural links between Māori students stories and experiences to new ideas and concepts](#)

Date

21 May 2024

Link

inclusive.tki.org.nz/guides/supporting-akonga-maori/make-cultural-links-between-maori-students-stories-and-experiences-to-new-ideas-and-concepts

Develop a culturally responsive approach

Russell Bishop explains, students must be able to bring their own experiences to the classroom and see that their experiences are accepted and valued. Then, Māori will be part of the learning process as Māori.”



Video hosted on Vimeo <http://vimeo.com/111160942>

[View transcript](#)

Source:

[Te Kotahitanga \(NZ\)](#)

<http://tekotahitanga.tki.org.nz/Videos/Interviews/Changing-Maori-educational-experiences>

Inclusive Education

From

Guide: [Supporting ākonga Māori](#)

Strategy: [Co-design a culturally sustaining environment](#)

Suggestion: [Make cultural links between Māori students stories and experiences to new ideas and concepts](#)

Date

21 May 2024

Link

inclusive.tki.org.nz/guides/supporting-akonga-maori/make-cultural-links-between-maori-students-stories-and-experiences-to-new-ideas-and-concepts

Use authentic learning contexts

To learn Māori words for kai, students are making pizza. They are supported with text and visual cues in this cooperative activity.



Video hosted on Vimeo <http://vimeo.com/120408165>

[View transcript](#)

Source:

[He Reo Tupu, He Reo Ora \(NZ\)](#)

<http://hereoora.tki.org.nz/Videos/What-to-do-with-the-resources/Pathways-to-learning>

Inclusive Education

From

Guide: [Supporting ākonga Māori](#)

Strategy: [Co-design a culturally sustaining environment](#)

Suggestion: [Make cultural links between Māori students stories and experiences to new ideas and concepts](#)

Date

21 May 2024

Link

inclusive.tki.org.nz/guides/supporting-akonga-maori/make-cultural-links-between-maori-students-stories-and-experiences-to-new-ideas-and-concepts

Connect culture to learning

At Tolaga Bay Area School, teacher Julie McLaughlin brings cultural context into learning. In this example of ako, everyone in the classroom, including the teacher, is a learner.



Video hosted on Vimeo <http://vimeo.com/113877056>

[View transcript](#)

Source:

[Te Mangōroa \(NZ\)](#)

<http://temangoroa.tki.org.nz/Video-stories/TMK-Culture-counts-1>

Inclusive Education

From

Guide: [Supporting ākonga Māori](#)

Strategy: [Co-design a culturally sustaining environment](#)

Suggestion: [Make cultural links between Māori students stories and experiences to new ideas and concepts](#)

Date

21 May 2024

Link

inclusive.tki.org.nz/guides/supporting-akonga-maori/make-cultural-links-between-maori-students-stories-and-experiences-to-new-ideas-and-concepts

Connect to personal experiences

Support students to make connections within relevant contexts, such as sharing a mihi.

They'd feel a lot more confident talking about something that they were certain about, like their heritage, rather than something that they had gone and taken out of, say, library books, to present to the class.

Linda Sweeny, Associate Principal, Te Kura o Tiori Burnham School

Source:

[Enabling e-Learning](#)

<http://elearning.tki.org.nz/Beyond-the-classroom/Engaging-with-the-community/Sharing-a-mihi>

Inclusive Education

From

Guide: [Supporting ākonga Māori](#)

Strategy: [Co-design a culturally sustaining environment](#)

Suggestion: [Make cultural links between Māori students stories and experiences to new ideas and concepts](#)

Date

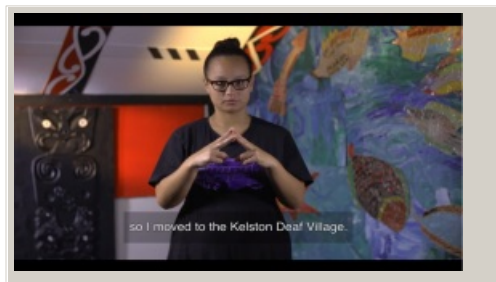
21 May 2024

Link

inclusive.tki.org.nz/guides/supporting-akonga-maori/make-cultural-links-between-maori-students-stories-and-experiences-to-new-ideas-and-concepts

Support self-advocacy

Deaf rangatahi share what is important to them and how it has inspired their learning. Create opportunities for learners to share their needs and aspirations in ways that work for them.



Video hosted on Youtube http://youtu.be/_4Zk4WDJkhs

Closed Captions

Source:

[Ministry of Education | Te Tāhuhu o te Mātauranga](#)
https://youtu.be/_4Zk4WDJkhs

[Inclusive Education](#)

From

Guide: [Supporting ākonga Māori](#)

Strategy: [Co-design a culturally sustaining environment](#)

Suggestion: [Make cultural links between Māori students stories and experiences to new ideas and concepts](#)

Date

21 May 2024

Link

inclusive.tki.org.nz/guides/supporting-akonga-maori/make-cultural-links-between-maori-students-stories-and-experiences-to-new-ideas-and-concepts

Useful resources



Culture speaks: Cultural relationships and classroom learning

This book focuses on what it is like to be a young Māori person in a New Zealand secondary school classroom today. It presents and discusses narratives drawn from the voices of secondary-level ākonga Māori, their whānau, tumuaki, and kaiako.

Publisher: Huia Publishers

Price: **One off charge \$42.21**

[Visit website](#)

This information was downloaded/printed from the Ministry of Education's website "Inclusive Education". Except where otherwise noted it is Crown Copyright 2018.

Information on the Inclusive Education website is regularly updated so we recommend you check the website version of this information to ensure it remains current.