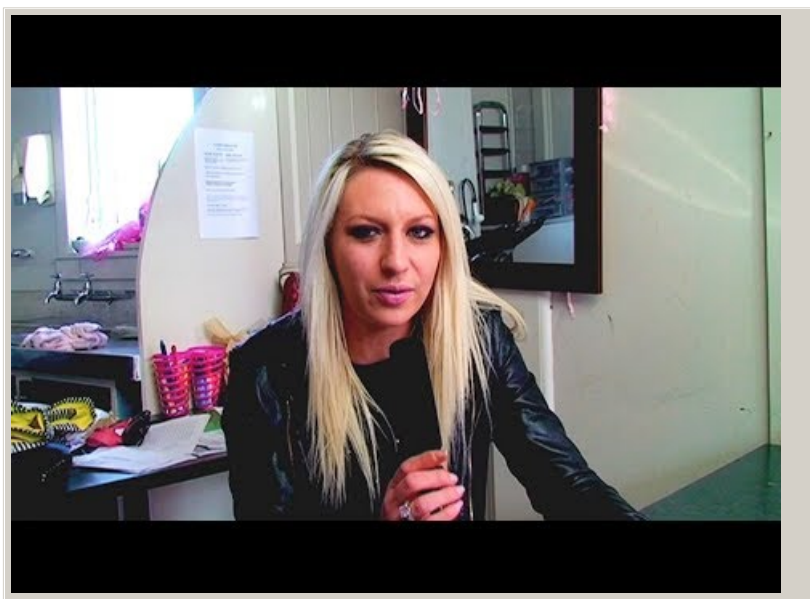


# Find out where students are from

Create ongoing opportunities for ākonga Māori to share where they are from, what is important to them, and why.



Video hosted on Youtube <http://youtu.be/ftdFs8mZ2oM>

No captions or transcript

**Source:**

[Matapuna Training Centre \(NZ\)](http://youtu.be/ftdFs8mZ2oM)  
<http://youtu.be/ftdFs8mZ2oM>

This information was downloaded/printed from the Ministry of Education's website "Inclusive Education". Except where otherwise noted it is Crown Copyright 2018.

Information on the Inclusive Education website is regularly updated so we recommend you check the website version of this information to ensure it remains current.

