

## Inclusive Education

From

Guide: [Partnering with parents, whānau, and communities](#)

Strategy: [Model a commitment to inclusion](#)

Suggestion: [Provide staff with professional development to support their discussions about inclusion](#)

Date

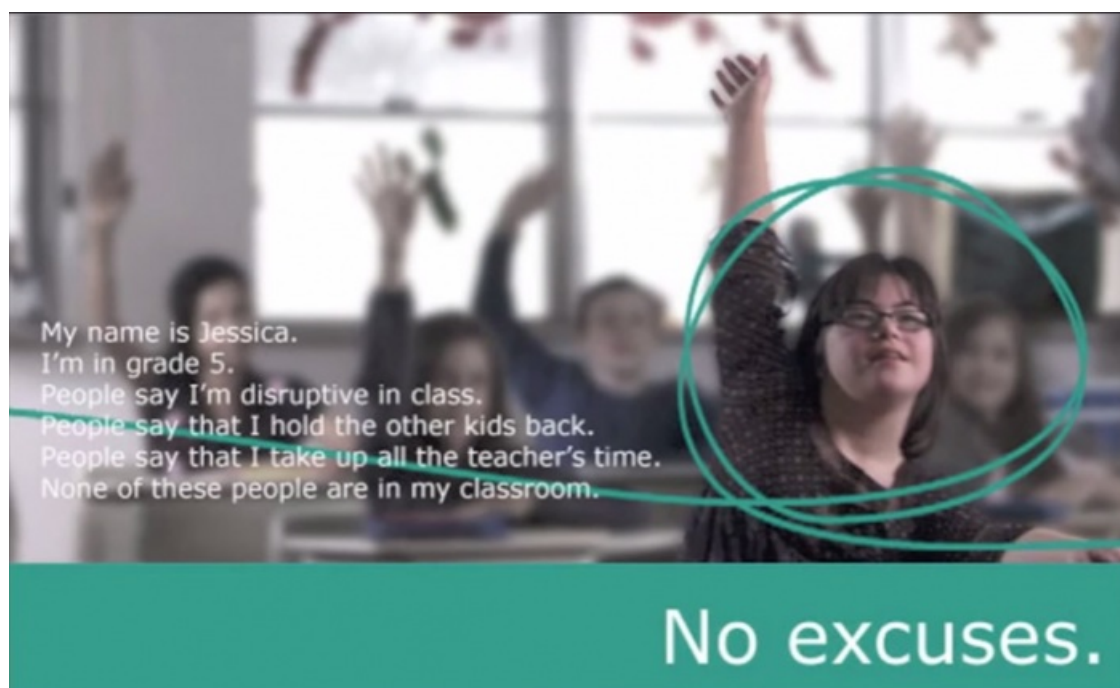
21 May 2024

Link

[inclusive.tki.org.nz/guides/partnering-with-parents-whanau-and-communities/provide-staff-with-professional-development-to-support-their-discussions-about-inclusion](https://inclusive.tki.org.nz/guides/partnering-with-parents-whanau-and-communities/provide-staff-with-professional-development-to-support-their-discussions-about-inclusion)

---

## Address concerns



Source:

[Canadian Association for Community Living](#)

<https://www.youtube.com/watch?v=ow8eddjOwI>

[View full image \(862 KB\)](#)

This information was downloaded/printed from the Ministry of Education's website "Inclusive Education". Except where otherwise noted it is Crown Copyright 2018.

Information on the Inclusive Education website is regularly updated so we recommend you check the website version of this information to ensure it remains current.

