

# Support wellbeing

A suggestion for implementing the strategy  
'Strategically resourcing for inclusive  
practices' from the Guide: [Leading inclusive  
schools](#)

---

## Includes:

- Use the Mana model
- Create a wellbeing culture
- Promote wellbeing across the curriculum
- Take students' perspectives
- Support teacher wellbeing
- Provide options for wellbeing support

Inclusive Education

From

Guide: [Leading schools that include all learners](#)

Strategy: [Strategically resourcing for inclusive practices](#)

Suggestion: [Support wellbeing](#)

Date

13 July 2025

Link

[inclusive.tki.org.nz/guides/leading-schools-that-include-all-learners/support-wellbeing](https://inclusive.tki.org.nz/guides/leading-schools-that-include-all-learners/support-wellbeing)

---

## Use the Mana model

Melinda Webber explains the Mana model that features in the Mental health education guide for NZ schools.



Video hosted on Vimeo <http://vimeo.com/748597903>

Closed Captions

Source:

[Mental health education, Ministry of Education](#)

<https://newzealandcurriculum.tahurangi.education.govt.nz/mental-health-education-guide/5637165639.p>

## Inclusive Education

From

Guide: [Leading schools that include all learners](#)

Strategy: [Strategically resourcing for inclusive practices](#)

Suggestion: [Support wellbeing](#)

Date

13 July 2025

Link

[inclusive.tki.org.nz/guides/leading-schools-that-include-all-learners/support-wellbeing](https://inclusive.tki.org.nz/guides/leading-schools-that-include-all-learners/support-wellbeing)

---

# Create a wellbeing culture

In this video, Te Kura Māori o Porirua talks about their vision and how kaiako are working with whānau to support tamariki wellbeing.



Video hosted on Youtube <http://youtu.be/3gJUSF31Kcw>

Closed Captions

Source:

[Education Gazette](#)

[https://www.youtube.com/watch?](https://www.youtube.com/watch?v=3gJUSF31Kcw&list=PLBPylfvv2Toazp1slxx1L6qPRJ82iyaQf&index=1)

[v=3gJUSF31Kcw&list=PLBPylfvv2Toazp1slxx1L6qPRJ82iyaQf&index=1](https://www.youtube.com/watch?v=3gJUSF31Kcw&list=PLBPylfvv2Toazp1slxx1L6qPRJ82iyaQf&index=1)

Inclusive Education

From

Guide: [Leading schools that include all learners](#)

Strategy: [Strategically resourcing for inclusive practices](#)

Suggestion: [Support wellbeing](#)

Date

13 July 2025

Link

[inclusive.tki.org.nz/guides/leading-schools-that-include-all-learners/support-wellbeing](https://inclusive.tki.org.nz/guides/leading-schools-that-include-all-learners/support-wellbeing)

---

## Promote wellbeing across the curriculum

Deliberately map and review curriculum opportunities to support wellbeing and mental health issues. Ensure all students have opportunities to explore wellbeing issues at all year levels.

- Develop culturally responsive approaches to wellbeing and hauora.
- Explicitly teach wellbeing through Health and PE using the Mana model.
- Integrate social and emotional learning.
- Map out wellbeing themes such as resilience and belonging across all curriculum areas.
- Identify and implement programmes that meet wellbeing needs.

Inclusive Education

From

Guide: [Leading schools that include all learners](#)

Strategy: [Strategically resourcing for inclusive practices](#)

Suggestion: [Support wellbeing](#)

Date

13 July 2025

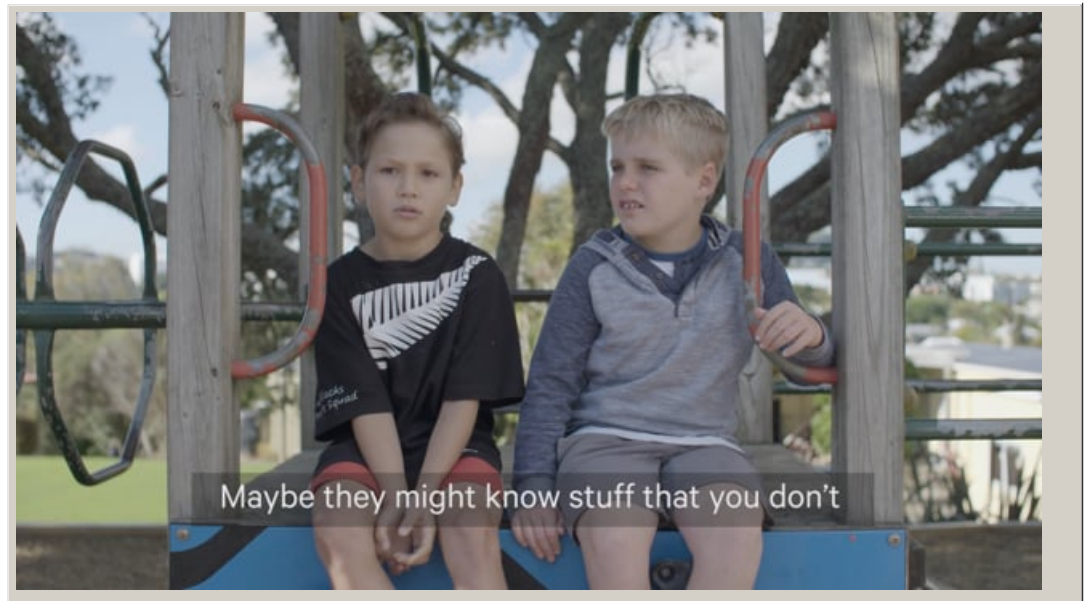
Link

[inclusive.tki.org.nz/guides/leading-schools-that-include-all-learners/support-wellbeing](https://inclusive.tki.org.nz/guides/leading-schools-that-include-all-learners/support-wellbeing)

---

## Take students' perspectives

Build relationships and talk to your students about disability and inclusion to understand their perspectives and wellbeing needs.



Video hosted on Vimeo <http://vimeo.com/169769705>

Closed Captions

Source:

[Ministry of Education](#)

<https://vimeo.com/showcase/2950799/video/169769705>

## Inclusive Education

From

Guide: [Leading schools that include all learners](#)

Strategy: [Strategically resourcing for inclusive practices](#)

Suggestion: [Support wellbeing](#)

Date

13 July 2025

Link

[inclusive.tki.org.nz/guides/leading-schools-that-include-all-learners/support-wellbeing](https://inclusive.tki.org.nz/guides/leading-schools-that-include-all-learners/support-wellbeing)

---

# Support teacher wellbeing

Sancta  
Maria  
College in  
Auckland  
created The  
Good New  
Habits  
Book when  
they found  
teachers  
were  
floundering  
due to  
workload  
intensity,  
demands  
on time  
and an  
unbalanced  
approach.



Video hosted on Vimeo <http://vimeo.com/277182042>

Closed Captions

Source:

[Teaching Council of Aotearoa New Zealand](#)

<https://teachingcouncil.nz/resource-centre/teacher-wellbeing/#case>

Inclusive Education

From

Guide: [Leading schools that include all learners](#)

Strategy: [Strategically resourcing for inclusive practices](#)

Suggestion: [Support wellbeing](#)

Date

13 July 2025

Link

[inclusive.tki.org.nz/guides/leading-schools-that-include-all-learners/support-wellbeing](https://inclusive.tki.org.nz/guides/leading-schools-that-include-all-learners/support-wellbeing)

---

## Provide options for wellbeing support

Provide students with access to a variety of wellbeing resources to cater for the range of needs, preferences and circumstances.

Consider opportunities that can be provided for students to access:

- peer-to-peer support groups
- on-site health clinics
- on-site nurse consultations
- on-site school counsellors
- youth workers
- health information
- referral pathways for medical care
- access to LGBTQIA+ youth support groups.

This information was downloaded/printed from the Ministry of Education's website "Inclusive Education". Except where otherwise noted it is Crown Copyright 2018.

Information on the Inclusive Education website is regularly updated so we recommend you check the website version of this information to ensure it remains current.